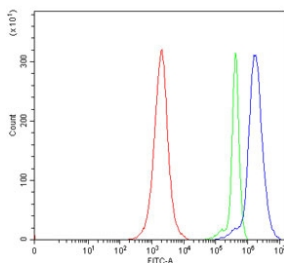


E2F5 Antibody (RQ7165)

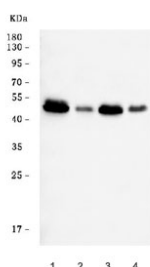
Catalog No.	Formulation	Size
RQ7165	0.5mg/ml if reconstituted with 0.2ml sterile DI water	100 ug

[Bulk quote request](#)

Availability	1-3 business days
Species Reactivity	Human
Format	Antigen affinity purified
Host	Rabbit
Clonality	Polyclonal (rabbit origin)
Isotype	Rabbit IgG
Purity	Antigen affinity purified
Buffer	Lyophilized from 1X PBS with 2% Trehalose
UniProt	Q15329
Applications	Western Blot : 0.5-1ug/ml Flow Cytometry : 1-3ug/million cells Direct ELISA : 0.1-0.5ug/ml
Limitations	This E2F5 antibody is available for research use only.



Flow cytometry testing of human JK cells with E2F5 antibody at 1ug/million cells (blocked with goat sera); Red=cells alone, Green=isotype control, Blue= E2F5 antibody.



Western blot testing of human 1) HeLa, 2) Raji, 3) K562 and 4) T-47D cell lysate with E2F5 antibody. Predicted molecular weight ~38 kDa but may be observed at higher molecular weights due to phosphorylation.

Description

Transcription factor E2F5 is a protein that in humans is encoded by the E2F5 gene. The protein encoded by this gene is a member of the E2F family of transcription factors. The E2F family plays a crucial role in the control of cell cycle and action of tumor suppressor proteins and is also a target of the transforming proteins of small DNA tumor viruses. The E2F proteins contain several evolutionarily conserved domains that are present in most members of the family. These domains include a DNA binding domain, a dimerization domain which determines interaction with the differentiation regulated transcription factor proteins (DP), a transactivation domain enriched in acidic amino acids, and a tumor suppressor protein association domain which is embedded within the transactivation domain. This protein is differentially phosphorylated and is expressed in a wide variety of human tissues. It has higher identity to E2F4 than to other family members. Both this protein and E2F4 interact with tumor suppressor proteins p130 and p107, but not with pRB. Alternative splicing results in multiple variants encoding different isoforms.

Application Notes

Optimal dilution of the E2F5 antibody should be determined by the researcher.

Immunogen

Recombinant human E2F5 protein (amino acids C121-Y346) was used as the immunogen for the E2F5 antibody.

Storage

After reconstitution, the E2F5 antibody can be stored for up to one month at 4°C. For long-term, aliquot and store at -20°C. Avoid repeated freezing and thawing.