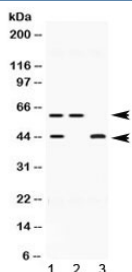


## E2F4 Antibody (R32525)

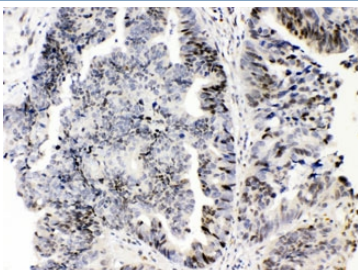
Catalog No.	Formulation	Size
R32525	0.5mg/ml if reconstituted with 0.2ml sterile DI water	100 ug

[Bulk quote request](#)

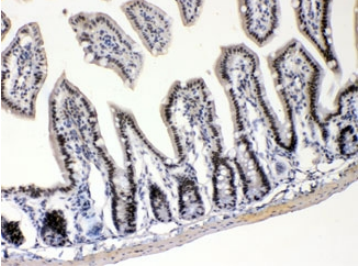
<b>Availability</b>	1-3 business days
<b>Species Reactivity</b>	Human, Mouse, Rat
<b>Format</b>	Antigen affinity purified
<b>Host</b>	Rabbit
<b>Clonality</b>	Polyclonal (rabbit origin)
<b>Isotype</b>	Rabbit IgG
<b>Purity</b>	Antigen affinity
<b>Buffer</b>	Lyophilized from 1X PBS with 2.5% BSA and 0.025% sodium azide
<b>UniProt</b>	Q16254
<b>Localization</b>	Cytoplasmic, nuclear
<b>Applications</b>	Western Blot : 0.5-1ug/ml IHC (FFPE) : 1-2ug/ml
<b>Limitations</b>	This E2F4 antibody is available for research use only.



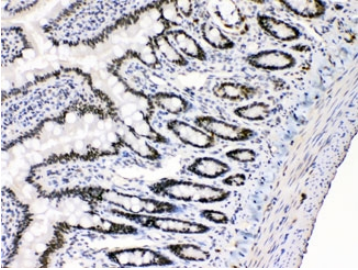
Western blot testing of human 1) HeLa, 2) U-2 OS and 3) MCF7 lysate with E2F4 antibody at 0.5ug/ml. Expected molecular weight ~44 kDa (unmodified) and 60-65 kDa (phosphorylated).



E2F4 Antibody Intestine Cancer IHC. Immunohistochemistry testing of FFPE human intestinal cancer tissue with E2F4 antibody at 1ug/ml. HIER: steam section in pH6 citrate buffer for 20 min.



E2F4 Antibody Mouse Intestine IHC. Immunohistochemistry testing of FFPE mouse intestine with E2F4 antibody at 1ug/ml. HIER: steam section in pH6 citrate buffer for 20 min.



E2F4 Antibody Rat Intestine IHC. Immunohistochemistry testing of FFPE rat intestine with E2F4 antibody at 1ug/ml. HIER: steam section in pH6 citrate buffer for 20 min.

## Description

E2F4 is a member of the E2F family of transcription factors. The E2F family plays a crucial role in the control of cell cycle and action of tumor suppressor proteins and is also a target of the transforming proteins of small DNA tumor viruses. This protein binds to all three of the tumor suppressor proteins pRB, p107 and p130, but with higher affinity to the last two.

Explore our [E2F4 Antibody - Cell Cycle Regulation and Transcriptional Repressor Marker](#) (E2F4/4224) page for a broader view of E2F4 expression and RB pathway-associated transcriptional control.

## Application Notes

Differences in protocols and secondary/substrate sensitivity may require the E2F4 antibody to be titrated for optimal performance.

## Immunogen

Amino acids 106-144 (ELQREQELDQHKVWVQQSIRNVTEDVQNSCLAYVTHED) from the human protein were used as the immunogen for the E2F4 antibody.

## Storage

After reconstitution, the E2F4 antibody can be stored for up to one month at 4oC. For long-term, aliquot and store at -20oC. Avoid repeated freezing and thawing.