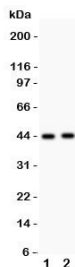


E2F4 Antibody (R31276)

Catalog No.	Formulation	Size
R31276	0.5mg/ml if reconstituted with 0.2ml sterile DI water	100 ug

[Bulk quote request](#)

Availability	1-3 business days
Species Reactivity	Human, Rat
Format	Antigen affinity purified
Host	Rabbit
Clonality	Polyclonal (rabbit origin)
Isotype	Rabbit IgG
Purity	Antigen affinity
Buffer	Lyophilized from 1X PBS with 2.5% BSA and 0.025% sodium azide/thimerosal
UniProt	Q16254
Localization	Cytoplasmic, nuclear
Applications	Western Blot : 0.5-1ug/ml
Limitations	This E2F4 antibody is available for research use only.



Western blot testing of E2F4 antibody and Lane 1: rat lung; 2: human SMMC-7721 lysate. Expected molecular weight ~44 kDa (unmodified) and 60-65 kDa (phosphorylated).

Description

Transcription factor E2F4 is a protein that in humans is encoded by the E2F4 gene. The protein encoded by this gene is a member of the E2F family of transcription factors. The E2F family plays a crucial role in the control of cell cycle and action of tumor suppressor proteins and is also a target of the transforming proteins of small DNA tumor viruses. These domains include a DNA binding domain, a dimerization domain which determines interaction with the differentiation regulated transcription factor proteins (DP), a transactivation domain enriched in acidic amino acids, and a tumor suppressor protein

association domain which is embedded within the transactivation domain. This protein binds to all three of the tumor suppressor proteins pRB, p107 and p130, but with higher affinity to the last two. It plays an important role in the suppression of proliferation-associated genes, and its gene mutation and increased expression may be associated with human cancer.

Explore our [E2F4 Antibody - Cell Cycle Regulation and Transcriptional Repressor Marker](#) (E2F4/4224) page for a broader view of E2F4 expression and RB pathway-associated transcriptional control.

Application Notes

The stated application concentrations are suggested starting amounts. Titration of the E2F4 antibody may be required due to differences in protocols and secondary/substrate sensitivity.

Immunogen

An amino acid sequence from the middle region of human E2F4 (LPKPALAQSQEASRPN) was used as the immunogen for this E2F4 antibody.

Storage

After reconstitution, the E2F4 antibody can be stored for up to one month at 4oC. For long-term, aliquot and store at -20oC. Avoid repeated freezing and thawing.