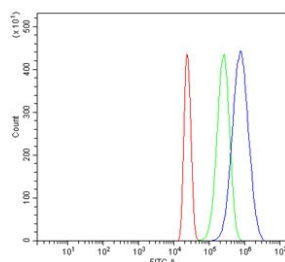


E2F3 Antibody (RQ6764)

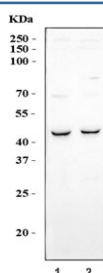
Catalog No.	Formulation	Size
RQ6764	0.5mg/ml if reconstituted with 0.2ml sterile DI water	100 ug

Bulk quote request

Availability	1-3 business days
Species Reactivity	Human
Format	Antigen affinity purified
Clonality	Polyclonal (rabbit origin)
Isotype	Rabbit IgG
Purity	Antigen affinity purified
Buffer	Lyophilized from 1X PBS with 2% Trehalose
UniProt	O00716
Applications	Western Blot : 1-2ug/ml Flow Cytometry : 1-3ug/million cells Direct ELISA : 0.1-0.5ug/ml
Limitations	This E2F3 antibody is available for research use only.



Flow cytometry testing of human HL60 cells with E2F3 antibody at 1ug/million cells (blocked with goat sera); Red=cells alone, Green=isotype control, Blue= E2F3 antibody.



Western blot testing of human 1) K562 and 2) HEL cell lysate with E2F3 antibody. Predicted molecular weight ~49 kDa.

Description

Transcription factor E2F3, also known as KIAA0075, is a protein that in humans is encoded by the E2F3 gene. The protein encoded by this gene is a member of the E2F family of transcription factors. By fluorescence in situ hybridization, E2F3 gene is mapped to 6q22.3. The induction of specific E2F activities is an essential component in the MYC pathways that control cell proliferation and cell fate decisions. This gene encodes a member of a small family of transcription factors that function through binding of DP interaction partner proteins. The encoded protein recognizes a specific sequence motif in DNA and interacts directly with the retinoblastoma protein (pRB) to regulate the expression of genes involved in the cell cycle.

Application Notes

Optimal dilution of the E2F3 antibody should be determined by the researcher.

Immunogen

Recombinant human protein (amino acids E270-A320) was used as the immunogen for the E2F3 antibody.

Storage

After reconstitution, the E2F3 antibody can be stored for up to one month at 4oC. For long-term, aliquot and store at -20oC. Avoid repeated freezing and thawing.