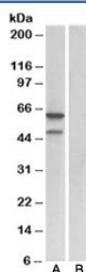


E2F3 Antibody (R33522)

Catalog No.	Formulation	Size
R33522-100UG	0.5 mg/ml in 1X TBS, pH7.3, with 0.5% BSA (US sourced) and 0.02% sodium azide	100 ug

[Bulk quote request](#)

Availability	1-3 business days
Species Reactivity	Human, Mouse
Predicted Reactivity	Human
Format	Antigen affinity purified
Host	Goat
Clonality	Polyclonal (goat origin)
Isotype	Goat Ig
Purity	Antigen affinity
Gene ID	1871
Applications	Western Blot : 1-3ug/ml ELISA (peptide) LOD : 1:8000
Limitations	This E2F3 antibody is available for research use only.



Western blot testing of mouse fetal lung lysate with E2F3 antibody at 1ug/ml with [B] and without [A] blocking/immunizing peptide. Predicted molecular weight: ~49 kDa but can also be observed from 56~66 kDa.

Description

Additional name(s) for this target protein: E2F transcription factor 3

Application Notes

Optimal dilution of the E2F3 antibody should be determined by the researcher.

Immunogen

Amino acids DLEKLPLVEDFMCS were used as the immunogen for this E2F3 antibody.

Storage

Aliquot and store the E2F3 antibody at -20oC.