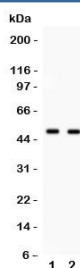


## E2F3 Antibody (R31261)

Catalog No.	Formulation	Size
R31261	0.5mg/ml if reconstituted with 0.2ml sterile DI water	100 ug

**Bulk quote request**

<b>Availability</b>	1-3 business days
<b>Species Reactivity</b>	Human, Mouse
<b>Format</b>	Antigen affinity purified
<b>Clonality</b>	Polyclonal (rabbit origin)
<b>Isotype</b>	Rabbit IgG
<b>Purity</b>	Antigen affinity
<b>Buffer</b>	Lyophilized from 1X PBS with 2.5% BSA and 0.025% sodium azide/thimerosal
<b>UniProt</b>	O00716
<b>Applications</b>	Western Blot : 0.5-1ug/ml
<b>Limitations</b>	This E2F3 antibody is available for research use only.



Western blot testing of E2F3 antibody and 1. HeLa, 2. COLO320 cell lysate.  
Expected/observed molecular weight: ~49kDa.

## Description

Transcription factor E2F3, also known as KIAA0075, is a protein that in humans is encoded by the E2F3 gene. The protein encoded by this gene is a member of the E2F family of transcription factors. The induction of specific E2F activities is an essential component in the MYC pathways that control cell proliferation and cell fate decisions. This gene encodes a member of a small family of transcription factors that function through binding of DP interaction partner proteins. E2F3 recognizes a specific sequence motif in DNA and interacts directly with the retinoblastoma protein(pRB) to regulate the expression of genes involved in the cell cycle.

## Application Notes

The stated application concentrations are suggested starting amounts. Titration of the E2F3 antibody may be required due to differences in protocols and secondary/substrate sensitivity.

## Immunogen

An amino acid sequence from the C-terminus of human E2F3 (DLFDAYDLEKLPLVEDFMCS) was used as the immunogen for this E2F3 antibody (100% mouse homology).

## Storage

After reconstitution, the E2F3 antibody can be stored for up to one month at 4oC. For long-term, aliquot and store at -20oC. Avoid repeated freezing and thawing.