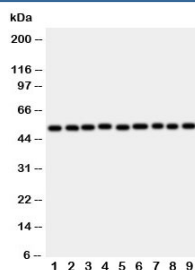


E2F2 Antibody (R30908)

Catalog No.	Formulation	Size
R30908	0.5mg/ml if reconstituted with 0.2ml sterile DI water	100 ug

[Bulk quote request](#)

Availability	1-3 business days
Species Reactivity	Human, Mouse, Rat
Format	Antigen affinity purified
Host	Rabbit
Clonality	Polyclonal (rabbit origin)
Isotype	Rabbit IgG
Purity	Antigen affinity
Buffer	Lyophilized from 1X PBS with 2.5% BSA and 0.025% sodium azide/thimerosal
UniProt	Q14209
Applications	Western Blot : 0.5-1ug/ml
Limitations	This E2F2 antibody is available for research use only.



Western blot testing of E2F2 antibody and rat samples 1: lung; 2: heart; 3: brain; 4: kidney; and human samples 5: HeLa; 6: COLO320; 7: A549; 8: MCF-7; 9: SMMC-7721 cell lysate. Predicted molecular weigh: 47-52 kDa.

Description

E2F transcription factor 2, also called E2F-2, is a member of the E2F family of transcription factors. The E2F family plays a crucial role in the control of cell cycle and action of tumor suppressor proteins and is also a target of the transforming proteins of small DNA tumor viruses. The gene is mapped to 1p36 by fluorescence in situ hybridization. Electrophoretic mobility shift assays revealed the specific binding of E2F2 to ECE1b promoter sequences containing either allele of the C-338A polymorphism, with the -338A allele being associated with an increased affinity to E2F2 compared with -338C. The ability of Myc to induce S phase was impaired in the absence of either E2f2 or E2f3 but not E2f1 or E2f4. In contrast, the ability of Myc to induce apoptosis was markedly reduced in cells deleted for E2f1 but not E2f2 or E2f3.

Application Notes

The stated application concentrations are suggested starting amounts. Titration of the E2F2 antibody may be required due to differences in protocols and secondary/substrate sensitivity.

Immunogen

An amino acid sequence from the C-terminus of human E2F transcription factor 2 (ISDLFDSYDLGDLLIN) was used as the immunogen for this E2F2 antibody (100% mouse homology).

Storage

After reconstitution, the E2F2 antibody can be stored for up to one month at 4oC. For long-term, aliquot and store at -20oC. Avoid repeated freezing and thawing.