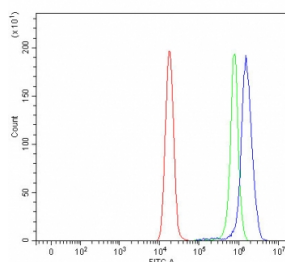


E2F1 Antibody (RQ8118)

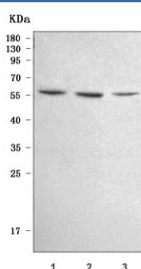
Catalog No.	Formulation	Size
RQ8118	0.5mg/ml if reconstituted with 0.2ml sterile DI water	100 ug

Bulk quote request

Availability	1-3 business days
Species Reactivity	Human
Format	Antigen affinity purified
Clonality	Polyclonal (rabbit origin)
Isotype	Rabbit IgG
Purity	Antigen affinity purified
Buffer	Lyophilized from 1X PBS with 2% Trehalose
UniProt	Q01094
Applications	Western Blot : 0.5-1ug/ml Flow Cytometry : 1-3ug/million cells Direct ELISA : 0.1-0.5ug/ml
Limitations	This E2F1 antibody is available for research use only.



Flow cytometry testing of fixed and permeabilized human HeLa cells with E2F1 antibody at 1ug/million cells (blocked with goat sera); Red=cells alone, Green=isotype control, Blue= E2F1 antibody.



Western blot testing of human 1) Jurkat, 2) HeLa and 3) A431 cell lysate with E2F1 antibody. Expected molecular weight: 48-60 kDa.

Description

Transcription factor E2F1 is a protein that in humans is encoded by the E2F1 gene. The protein encoded by this gene is a member of the E2F family of transcription factors. The E2F family plays a crucial role in the control of cell cycle and action of tumor suppressor proteins and is also a target of the transforming proteins of small DNA tumor viruses. The E2F proteins contain several evolutionally conserved domains found in most members of the family. These domains include a DNA binding domain, a dimerization domain which determines interaction with the differentiation regulated transcription factor proteins (DP), a transactivation domain enriched in acidic amino acids, and a tumor suppressor protein association domain which is embedded within the transactivation domain. This protein and another 2 members, E2F2 and E2F3, have an additional cyclin binding domain. This protein binds preferentially to retinoblastoma protein pRB in a cell-cycle dependent manner. It can mediate both cell proliferation and p53-dependent/independent apoptosis.

Application Notes

Optimal dilution of the E2F1 antibody should be determined by the researcher.

Immunogen

E. coli-derived recombinant human protein (amino acids Q230-D277) was used as the immunogen for the E2F1 antibody.

Storage

After reconstitution, the E2F1 antibody can be stored for up to one month at 4oC. For long-term, aliquot and store at -20oC. Avoid repeated freezing and thawing.