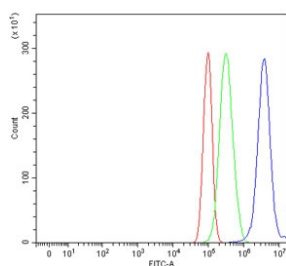


E2F1 Antibody (RQ6615)

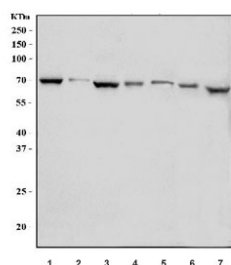
Catalog No.	Formulation	Size
RQ6615	0.5mg/ml if reconstituted with 0.2ml sterile DI water	100 ug

Bulk quote request

Availability	1-3 business days
Species Reactivity	Human, Mouse, Rat
Format	Antigen affinity purified
Host	Rabbit
Clonality	Polyclonal (rabbit origin)
Isotype	Rabbit IgG
Purity	Antigen affinity purified
Buffer	Lyophilized from 1X PBS with 2% Trehalose
UniProt	Q01094
Applications	Western Blot : 1-2ug/ml Flow Cytometry : 1-3ug/million cells Direct ELISA : 0.1-0.5ug/ml
Limitations	This E2F1 antibody is available for research use only.



Flow cytometry testing of human PC-3 cells with E2F1 antibody at 1ug/million cells (blocked with goat sera); Red=cells alone, Green=isotype control, Blue= E2F1 antibody.



Western blot testing of 1) human HeLa, 2) human A431, 3) human Caco-2, 4) rat brain, 5) rat testis, 6) mouse brain and 7) mouse testis tissue lysate with E2F1 antibody. Predicted molecular weight: 48-70 kDa.

Description

Transcription factor E2F1 is a protein that in humans is encoded by the E2F1 gene. The protein encoded by this gene is a member of the E2F family of transcription factors. The E2F family of transcription factors appears to play a critical role in the transcription of certain genes required for cell cycle progression. E2F1, the first cloned member of this family, is regulated during the cell cycle at the mRNA level by changes in transcription of the E2F1 gene and at the protein level by complex formation with proteins such as the retinoblastoma gene product(pRB), cyclin A and DP1. E2F1 can override a pRB-induced G1/S block and can behave as an oncogene in certain cells. E2F1 was cloned and was found to contain seven exons. Fluorescence in situ hybridization localized E2F1 to chromosome 20q11. The E2F1 transcription factor can promote proliferation or apoptosis when activated, and is a key downstream target of the retinoblastoma tumour suppressor protein(pRB).

Application Notes

Optimal dilution of the E2F1 antibody should be determined by the researcher.

Immunogen

Recombinant human protein (amino acids K89-A328) was used as the immunogen for the E2F1 antibody.

Storage

After reconstitution, the E2F1 antibody can be stored for up to one month at 4°C. For long-term, aliquot and store at -20°C. Avoid repeated freezing and thawing.