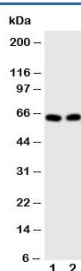


E2F1 Antibody (R30637)

Catalog No.	Formulation	Size
R30637	0.5mg/ml if reconstituted with 0.2ml sterile DI water	100 ug

[Bulk quote request](#)

Availability	1-3 business days
Species Reactivity	Human, Mouse, Rat
Format	Antigen affinity purified
Host	Rabbit
Clonality	Polyclonal (rabbit origin)
Isotype	Rabbit IgG
Purity	Antigen affinity
Buffer	Lyophilized from 1X PBS with 2% Trehalose
UniProt	Q01094
Applications	Western Blot : 0.5-1ug/ml
Limitations	This E2F1 antibody is available for research use only.



Western blot testing of E2F1 antibody and Lane 1: HeLa; 2: MCF-7 cell lysate. Predicted molecular weight: 48-70 kDa.

Description

E2F1 is a member of the E2F family of transcription factors. The E2F family of transcription factors play a critical role in the transcription of certain genes required for cell cycle progression. E2F1, the first cloned member of this family, is regulated during the cell cycle at the mRNA level by changes in transcription of the gene and at the protein level by complex formation with proteins such as the retinoblastoma gene product(pRB), cyclin A and DP1. E2F1 can override a pRB-induced G1/S block and can behave as an oncogene in certain cells. The transcription factor can promote proliferation or apoptosis when activated, and is a key downstream target of the retinoblastoma tumor suppressor protein (pRB).

Application Notes

The stated application concentrations are suggested starting amounts. Titration of the E2F1 antibody may be required due to differences in protocols and secondary/substrate sensitivity.

Immunogen

An amino acid sequence from the middle region of human E2F1 (VTCQDLRSIADPAEQ) was used as the immunogen for this E2F1 antibody (100% homologous in human, mouse and rat).

Storage

After reconstitution, the E2F1 antibody can be stored for up to one month at 4oC. For long-term, aliquot and store at -20oC. Avoid repeated freezing and thawing.