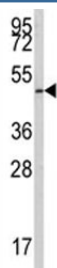


E2F1 Antibody (F50541)

Catalog No.	Formulation	Size
F50541-0.4ML	In 1X PBS, pH 7.4, with 0.09% sodium azide	0.4 ml
F50541-0.08ML	In 1X PBS, pH 7.4, with 0.09% sodium azide	0.08 ml

[Bulk quote request](#)

Availability	1-3 business days
Species Reactivity	Human
Format	Antigen affinity purified
Host	Rabbit
Clonality	Polyclonal (rabbit origin)
Isotype	Rabbit Ig
Purity	Antigen affinity
UniProt	Q01094
Applications	Western Blot : 1:1000
Limitations	This E2F1 antibody is available for research use only.



Western blot analysis of E2F1 antibody and 293 lysate. Predicted molecular weight: 48-70 kDa.

Description

E2F1 is a member of the E2F family of transcription factors. The E2F family plays a crucial role in the control of cell cycle and action of tumor suppressor proteins and is also a target of the transforming proteins of small DNA tumor viruses. The E2F proteins contain several evolutionally conserved domains found in most members of the family. These domains include a DNA binding domain, a dimerization domain which determines interaction with the differentiation regulated transcription factor proteins (DP), a transactivation domain enriched in acidic amino acids, and a tumor suppressor protein association domain which is embedded within the transactivation domain. This protein and another two members, E2F2 and E2F3, have an additional cyclin binding domain. This protein binds preferentially to retinoblastoma protein pRB in a

cell-cycle dependent manner. It can mediate both cell proliferation and p53-dependent/independent apoptosis.

Application Notes

Titration of the E2F1 antibody may be required due to differences in protocols and secondary/substrate sensitivity.

Immunogen

A portion of amino acids 310-344 from the human protein was used as the immunogen for this E2F1 antibody.

Storage

Aliquot the E2F1 antibody and store frozen at -20oC or colder. Avoid repeated freeze-thaw cycles.