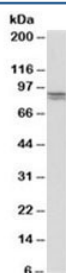


E-Cadherin Antibody (R33682)

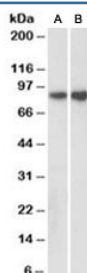
Catalog No.	Formulation	Size
R33682-100UG	0.5 mg/ml in 1X TBS, pH7.3, with 0.5% BSA (US sourced) and 0.02% sodium azide	100 ug

[Bulk quote request](#)

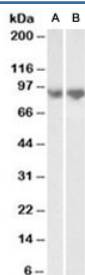
Availability	1-3 business days
Species Reactivity	Human, Mouse, Rat, Pig
Format	Antigen affinity purified
Clonality	Polyclonal (goat origin)
Isotype	Goat Ig
Purity	Antigen affinity
Gene ID	999
Localization	Cytoplasmic, membranous
Applications	Western Blot : 0.3-1ug/ml ELISA (peptide) LOD : 1:16000
Limitations	This E-Cadherin antibody is available for research use only.



Western blot testing of human kidney lysate with E-Cadherin antibody at 0.5ug/ml. Expected molecular weight: 135 kDa (precursor), 80-120 kDa (mature, depending on glycosylation level).



Western blot of pig kidney (A) and colon (B) lysates with E-Cadherin antibody at 0.3ug/ml. Expected molecular weight: 135 kDa (precursor), 80-120 kDa (mature, depending on glycosylation level).



Western blot of mouse lung (A) and rat lung (B) lysates with E-Cadherin antibody at 0.3ug/ml. Expected molecular weight: 135 kDa (precursor), 80-120 kDa (mature, depending on glycosylation level).

Description

Additional name(s) for this target protein: Cadherin 1, CDH1

Application Notes

Optimal dilution of the E-Cadherin antibody should be determined by the researcher.

Immunogen

Amino acids DYKINLKLMDNQNK were used as the immunogen for this E-Cadherin antibody. The amino acid sequence used as immunogen is from the extracellular portion of the protein.

Storage

Aliquot and store the E-Cadherin antibody at -20oC.