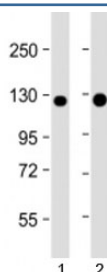


E-Cadherin Antibody / CDH1 [clone 1579CT577.150.80] (F53810)

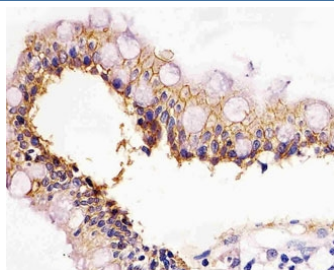
Catalog No.	Formulation	Size
F53810-0.2ML	In 1X PBS, pH 7.4, with 0.09% sodium azide	0.2 ml
F53810-0.05ML	In 1X PBS, pH 7.4, with 0.09% sodium azide	0.05 ml

[Bulk quote request](#)

Availability	1-3 business days
Species Reactivity	Human
Format	Purified
Clonality	Monoclonal (mouse origin)
Isotype	Mouse IgG1, kappa
Clone Name	1579CT577.150.80
Purity	Protein G affinity chromatography
UniProt	P12830
Localization	Cytoplasmic, membranous
Applications	Western Blot : 1:2000-4000 IHC (FFPE) : 1:25
Limitations	This E-Cadherin antibody is available for research use only.



Western blot testing of human 1) A431 and 2) T47D cell lysate with E-Cadherin antibody at 1:4000. Expected molecular weight: ~135 kDa (precursor), 80-120 kDa (mature, depending on glycosylation level).



IHC testing of FFPE human colon with E-Cadherin antibody at 1:25. HIER: steamed in pH6 citrate buffer.

Description

Cadherins are calcium-dependent cell adhesion proteins. They preferentially interact with themselves in a homophilic manner in connecting cells; cadherins may thus contribute to the sorting of heterogeneous cell types. E-Cadherin/CDH1 is involved in mechanisms regulating cell-cell adhesions, mobility and proliferation of epithelial cells. Has a potent invasive suppressor role. It is a ligand for integrin α -E/ β -7.

Application Notes

Titration of the E-Cadherin antibody may be required due to differences in protocols and substrate sensitivity.

Immunogen

A human recombinant protein of amino acids 1-392 was used as the immunogen for the E-Cadherin antibody.

Storage

Aliquot the E-Cadherin antibody and store frozen at -20°C or colder. Avoid repeated freeze-thaw cycles.