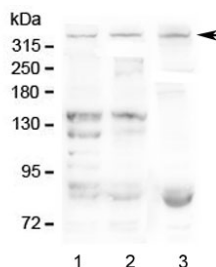


## Dystrophin Antibody (R31689)

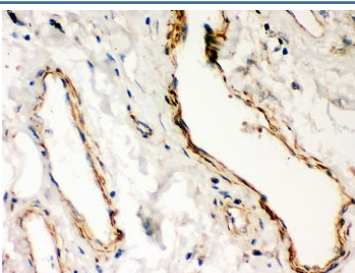
Catalog No.	Formulation	Size
R31689	0.5mg/ml if reconstituted with 0.2ml sterile DI water	100 ug

[Bulk quote request](#)

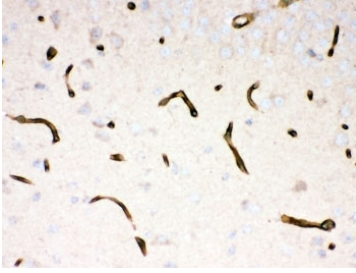
<b>Availability</b>	1-3 business days
<b>Species Reactivity</b>	Human, Mouse, Rat
<b>Format</b>	Antigen affinity purified
<b>Host</b>	Rabbit
<b>Clonality</b>	Polyclonal (rabbit origin)
<b>Isotype</b>	Rabbit IgG
<b>Purity</b>	Antigen affinity
<b>Buffer</b>	Lyophilized from 1X PBS with 2.5% BSA and 0.025% sodium azide
<b>Gene ID</b>	1756
<b>Applications</b>	Western Blot : 0.5-1ug/ml Immunohistochemistry (FFPE) : 0.5-1ug/ml Flow Cytometry : 1-3ug/million cells
<b>Limitations</b>	This Dystrophin antibody is available for research use only.



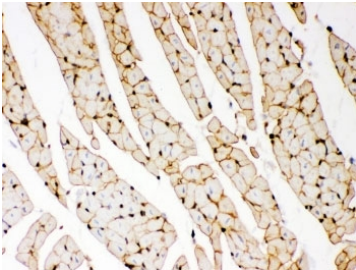
Western blot testing of 1) human HEK293, 2) human K562 and 3) mouse HEPA1-6 lysate with Dystrophin antibody at 0.5ug/ml. Predicted molecular weight ~427 kDa.



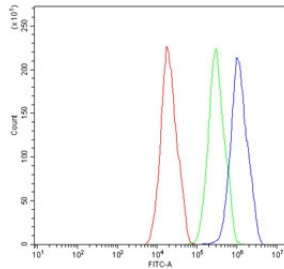
Dystrophin Antibody Lung Cancer Immunohistochemistry. IHC-P: Dystrophin antibody testing of human lung cancer tissue.



Dystrophin Antibody Mouse Brain Immunohistochemistry. IHC-P: Dystrophin antibody testing of mouse brain tissue.



Dystrophin Antibody Rat Heart Immunohistochemistry. IHC-P: Dystrophin antibody testing of rat heart tissue.



Dystrophin Antibody FACS. Flow cytometry testing of human HepG2 cells with Dystrophin antibody at 1ug/10<sup>6</sup> cells (blocked with goat sera); Red=cells alone, Green=isotype control, Blue= Dystrophin antibody.

## Description

Dystrophin Antibody detects Dystrophin, also known as DMD, a rod-shaped cytoplasmic protein, and a vital part of a protein complex that connects the cytoskeleton of a muscle fiber to the surrounding extracellular matrix through the cell membrane. It is mapped to Xp21.2-p21.1. This complex is variously known as the costamere or the dystrophin-associated protein complex. Many muscle proteins, such as alpha-dystrobrevin, syncoilin, synemin, sarcoglycan, dystroglycan, and sarcospan, colocalize with Dystrophin at the costamere. Dystrophin is a protein located between the sarcolemma and the outermost layer of myofilaments in the muscle fiber (myofiber). It is a cohesive protein, linking actin filaments to another support protein that resides on the inside surface of each muscle fiber's plasma membrane (sarcolemma).

This DMD antibody can be compared with our [Dystrophin Antibody](#) (clone DMD/3241) for analysis of dystrophin expression across muscle structure and neuromuscular disease studies.

## Application Notes

The stated application concentrations are suggested starting amounts. Titration of the Dystrophin antibody may be required due to differences in protocols and secondary/substrate sensitivity.

## Immunogen

Human partial recombinant protein (AA 3076-3404) was used as the immunogen for this Dystrophin antibody.

## Storage

After reconstitution, the Dystrophin antibody can be stored for up to one month at 4oC. For long-term, aliquot and store at -20oC. Avoid repeated freezing and thawing.

