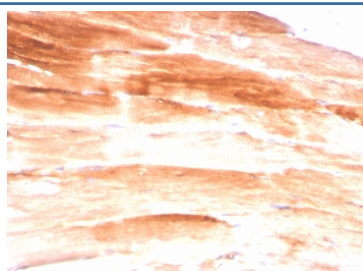


Dystrophin Antibody / DMD [clone DMD/3245] (V7540)

Catalog No.	Formulation	Size
V7540-100UG	0.2 mg/ml in 1X PBS with 0.1 mg/ml BSA (US sourced) and 0.05% sodium azide	100 ug
V7540-20UG	0.2 mg/ml in 1X PBS with 0.1 mg/ml BSA (US sourced) and 0.05% sodium azide	20 ug
V7540SAF-100UG	1 mg/ml in 1X PBS; BSA free, sodium azide free	100 ug
V7540IHC-7ML	Prediluted in 1X PBS with 0.1 mg/ml BSA (US sourced) and 0.05% sodium azide; *For IHC use only*	7 ml

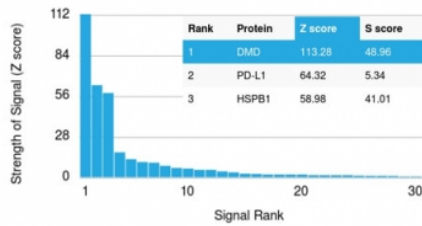
[Bulk quote request](#)

Availability	1-3 business days
Species Reactivity	Human
Format	Purified
Host	Mouse
Clonality	Monoclonal (mouse origin)
Isotype	Mouse IgG2a, kappa
Clone Name	DMD/3245
Purity	Protein G affinity chromatography
UniProt	P11532
Localization	Cell surface, cytoplasmic
Applications	ELISA (order BSA/sodium Azide-free Format For Coating) : Immunohistochemistry (FFPE) : 1-2ug/ml for 30 min at RT
Limitations	This Dystrophin antibody is available for research use only.



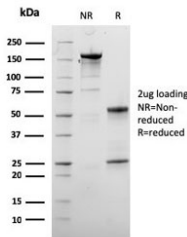
IHC staining of FFPE skeletal muscle with Dystrophin antibody (clone DMD/3245). HIER: boil tissue sections in pH6, 10mM citrate buffer, for 10-20 min and allow to cool before testing.

Human Protein Microarray Specificity Validation



Analysis of HuProt(TM) microarray containing more than 19,000 full-length human proteins using Dystrophin antibody (clone DMD/3245). These results demonstrate the foremost specificity of the DMD/3245 mAb.

Z- and S- score: The Z-score represents the strength of a signal that an antibody (in combination with a fluorescently-tagged anti-IgG secondary Ab) produces when binding to a particular protein on the HuProt(TM) array. Z-scores are described in units of standard deviations (SD's) above the mean value of all signals generated on that array. If the targets on the HuProt(TM) are arranged in descending order of the Z-score, the S-score is the difference (also in units of SD's) between the Z-scores. The S-score therefore represents the relative target specificity of an Ab to its intended target.



SDS-PAGE analysis of purified, BSA-free Dystrophin antibody (clone DMD/3245) as confirmation of integrity and purity.

Description

Dystrophin-glycoprotein complex (DGC) connects the F-Actin cytoskeleton on the inner surface of muscle fibers to the surrounding extracellular matrix, through the cell membrane interface. A deficiency in this protein contributes to Duchenne (DMD) and Becker (BMD) muscular dystrophies. The human dystrophin gene measures 2.4 megabases, has more than 80 exons, produces a 14 kb mRNA and contains at least 8 independent tissue-specific promoters and 2 poly A sites. The dystrophin mRNA can undergo differential splicing and produce a range of transcripts that encode a large set of proteins. Dystrophin represents approximately 0.002% of total striated muscle protein and localizes to triadic junctions in skeletal muscle, where it is thought to influence calcium ion homeostasis and force transmission.

Application Notes

Optimal dilution of the Dystrophin antibody should be determined by the researcher.

1. The prediluted format is supplied in a dropper bottle and is optimized for use in IHC. After epitope retrieval step (if required), drip mAb solution onto the tissue section and incubate at RT for 30 min.

Immunogen

Amino acids 114-263 from the human protein were used as the immunogen for the Dystrophin antibody.

Storage

Store the Dystrophin antibody at 2-8oC (with azide) or aliquot and store at -20oC or colder (without azide).

