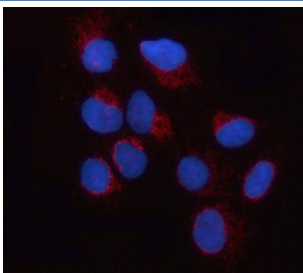


Dynamin-like 120 kDa protein Antibody / OPA1 (RQ7898)

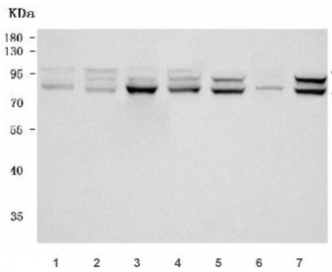
Catalog No.	Formulation	Size
RQ7898	0.5mg/ml if reconstituted with 0.2ml sterile DI water	100 ug

Bulk quote request

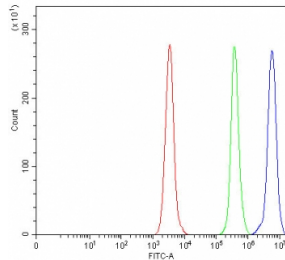
Availability	1-3 business days
Species Reactivity	Human, Mouse, Rat
Format	Antigen affinity purified
Host	Rabbit
Clonality	Polyclonal (rabbit origin)
Isotype	Rabbit IgG
Purity	Antigen affinity purified
Buffer	Lyophilized from 1X PBS with 2% Trehalose
UniProt	O60313
Localization	Cytoplasmic, membrane
Applications	Western Blot : 0.5-1ug/ml Immunofluorescence (FFPE) : 5ug/ml Flow Cytometry : 1-3ug/million cells Direct ELISA : 0.1-0.5ug/ml
Limitations	This Dynamin-like 120 kDa protein antibody is available for research use only.



Immunofluorescent staining of FFPE human U-2 OS cells with Dynamin-like 120 kDa protein antibody (red) and DAPI nuclear stain (blue). HIER: steam section in pH6 citrate buffer for 20 min.



Western blot testing of 1) human Ramos, 2) human HeLa, 3) human PANC-1, 4) human MCF7, 5) rat brain, 6) mouse eye and 7) mouse brain tissue lysate with Dynamin-like 120 kDa protein antibody. Predicted molecular weight: 111-120 kDa with multiple smaller isoforms from 81-95 kDa.



Flow cytometry testing of human Daudi cells with Dynamin-like 120 kDa protein antibody at 1ug/million cells (blocked with goat sera); Red=cells alone, Green=isotype control, Blue= Dynamin-like 120 kDa protein antibody.

Description

Dynamin-like 120 kDa protein, mitochondrial is a protein that in humans is encoded by the OPA1 gene. It is mapped to 3q29. This protein regulates mitochondrial fusion and cristae structure in the inner mitochondrial membrane (IMM) and contributes to ATP synthesis and apoptosis. This gene product is a nuclear-encoded mitochondrial protein with similarity to dynamin-related GTPases. It is a component of the mitochondrial network. Mutations in this gene have been associated with optic atrophy type 1, which is a dominantly inherited optic neuropathy resulting in progressive loss of visual acuity, leading in many cases to legal blindness. Multiple transcript variants encoding different isoforms have been found for this gene.

Application Notes

Optimal dilution of the Dynamin-like 120 kDa protein antibody should be determined by the researcher.

Immunogen

E. coli-derived recombinant human protein (amino acids D296-Q562) was used as the immunogen for the Dynamin-like 120 kDa protein antibody.

Storage

After reconstitution, the Dynamin-like 120 kDa protein antibody can be stored for up to one month at 4oC. For long-term, aliquot and store at -20oC. Avoid repeated freezing and thawing.