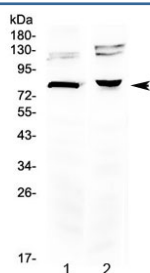


DVL3 Antibody (R32781)

Catalog No.	Formulation	Size
R32781	0.5mg/ml if reconstituted with 0.2ml sterile DI water	100 ug

Bulk quote request

Availability	1-3 business days
Species Reactivity	Mouse, Rat
Predicted Reactivity	Human
Format	Antigen affinity purified
Clonality	Polyclonal (rabbit origin)
Isotype	Rabbit IgG
Purity	Antigen affinity
Buffer	Lyophilized from 1X PBS with 2.5% BSA, 0.025% sodium azide
UniProt	Q92997
Applications	Western Blot : 0.5-1ug/ml
Limitations	This DVL3 antibody is available for research use only.



Western blot testing of 1) rat brain and 2) mouse brain lysate with DVL3 antibody at 0.5ug/ml. Predicted molecular weight ~78 kDa.

Description

Segment polarity protein dishevelled homolog DVL-3 is a protein that in humans is encoded by the DVL3 gene. It is mapped to 3q27.1. This gene is a member of a multi-gene family which shares strong similarity with the Drosophila dishevelled gene, dsh. The Drosophila dishevelled gene encodes a cytoplasmic phosphoprotein that regulates cell proliferation.

Application Notes

Optimal dilution of the DVL3 antibody should be determined by the researcher.

Immunogen

Amino acids 397-434 (DTERLDDFHLSIHSDMAAIVKAMASPESGLEVRDRMWL) from the human protein were used as the immunogen for the DVL3 antibody.

Storage

After reconstitution, the DVL3 antibody can be stored for up to one month at 4°C. For long-term, aliquot and store at -20°C. Avoid repeated freezing and thawing.