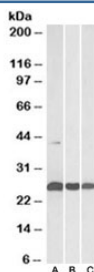


## DUSP6 Antibody (R35156)

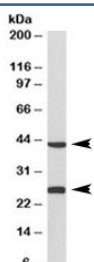
Catalog No.	Formulation	Size
R35156-100UG	0.5 mg/ml in 1X TBS, pH7.3, with 0.5% BSA (US sourced) and 0.02% sodium azide	100 ug

[Bulk quote request](#)

Availability	1-3 business days
Species Reactivity	Human, Mouse, Rat, Pig
Predicted Reactivity	Dog
Format	Antigen affinity purified
Host	Goat
Clonality	Polyclonal (goat origin)
Isotype	Goat Ig
Purity	Antigen affinity
Gene ID	1848
Applications	Western Blot : 0.3-1ug/ml ELISA (peptide) LOD : 1:128000
Limitations	This DUSP6 antibody is available for research use only.



Western blot testing of human [A], mouse [B] and rat [C] heart lysates with DUSP6 antibody at 0.3ug/ml. Predicted molecular weight ~42/26kDa (isoforms a/b).



Western blot of pig heart lysate with DUSP6 antibody at 0.3ug/ml. Predicted molecular weight ~42/26kDa (isoforms a/b).

## Description

Additional name(s) for this target protein: Dual specificity phosphatase 6, MKP3

## Application Notes

Optimal dilution of the DUSP6 antibody should be determined by the researcher.

## Immunogen

Amino acids PSNQNVYQVDSLQST were used as the immunogen for this DUSP6 antibody.

## Storage

Aliquot and store the DUSP6 antibody at -20oC.