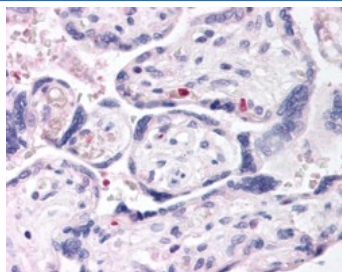


DUSP16 Antibody (R33137)

Catalog No.	Formulation	Size
R33137-100UG	0.5 mg/ml in 1X TBS, pH7.3, with 0.5% BSA (US sourced) and 0.02% sodium azide	100 ug

[Bulk quote request](#)

Availability	1-3 business days
Species Reactivity	Human
Predicted Reactivity	Cow, Dog, Mouse, Rat
Format	Antigen affinity purified
Host	Goat
Clonality	Polyclonal (goat origin)
Isotype	Goat Ig
Purity	Antigen affinity
Gene ID	80824
Applications	Immunohistochemistry (FFPE) : 2-4ug/ml ELISA (peptide) LOD : 1:32000
Limitations	This DUSP16 antibody is available for research use only.



IHC testing of FFPE human placenta with DUSP16 antibody at 2.5ug/ml. HIER: steamed with pH6 citrate buffer, AP-staining.

Description

Additional name(s) for this target protein: Dual specificity phosphatase 16

Application Notes

Optimal dilution of the DUSP16 antibody should be determined by the researcher.

Immunogen

Amino acids AHEMIGTQIVTER were used as the immunogen for this DUSP16 antibody.

Storage

Aliquot and store the DUSP16 antibody at -20oC.