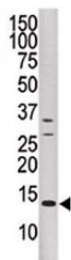


DUSP15 Antibody (F40176)

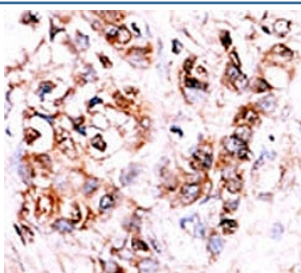
Catalog No.	Formulation	Size
F40176-0.4ML	In 1X PBS, pH 7.4, with 0.09% sodium azide	0.4 ml
F40176-0.08ML	In 1X PBS, pH 7.4, with 0.09% sodium azide	0.08 ml

[Bulk quote request](#)

Availability	1-3 business days
Species Reactivity	Human
Predicted Reactivity	Mouse
Format	Purified
Clonality	Polyclonal (rabbit origin)
Isotype	Rabbit Ig
Purity	Purified
UniProt	Q9H1R2
Applications	Western Blot : 1:1000 IHC (Paraffin) : 1:50-1:100
Limitations	This DUSP15 antibody is available for research use only.



Western blot analysis of DUSP15 antibody and CEM cell line lysate.



IHC analysis of FFPE human hepatocarcinoma stained with the DUSP15 antibody

Description

DUSP15 belongs to the non-receptor class of the protein-tyrosine phosphatase family. This protein has both protein-tyrosine phosphatase activity and serine/threonine-specific phosphatase activity, and therefore is known as a dual specificity phosphatase.

Application Notes

Titration of the DUSP15 antibody may be required due to differences in protocols and secondary/substrate sensitivity.

Immunogen

A portion of amino acids 17-44 from the human protein was used as the immunogen for this DUSP15 antibody.

Storage

Aliquot the DUSP15 antibody and store frozen at -20oC or colder. Avoid repeated freeze-thaw cycles.