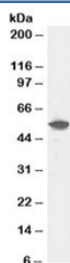


DUSP10 Antibody (R33320)

Catalog No.	Formulation	Size
R33320-100UG	0.5 mg/ml in 1X TBS, pH7.3, with 0.5% BSA (US sourced) and 0.02% sodium azide	100 ug

[Bulk quote request](#)

Availability	1-3 business days
Species Reactivity	Human
Predicted Reactivity	Mouse, Rat, Dog, Cow
Format	Antigen affinity purified
Host	Goat
Clonality	Polyclonal (goat origin)
Isotype	Goat Ig
Purity	Antigen affinity
Gene ID	11221
Applications	Western Blot : 0.5-2ug/ml ELISA (peptide) LOD : 1:8000
Limitations	This DUSP10 antibody is available for research use only.



Western blot testing of human liver lysate with DUSP10 antibody at 0.5ug/ml. Predicted molecular weight: ~53 kDa.

Description

Additional name(s) for this target protein: Dual specificity phosphatase 10

Application Notes

Optimal dilution of the DUSP10 antibody should be determined by the researcher.

Immunogen

Amino acids CRILTPKLMGVETVV were used as the immunogen for this DUSP10 antibody.

Storage

Aliquot and store the DUSP10 antibody at -20oC.