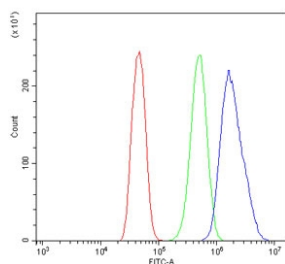


DUSP1 Antibody (RQ6126)

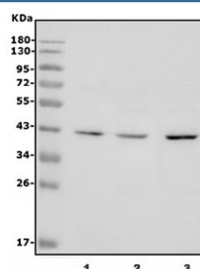
Catalog No.	Formulation	Size
RQ6126	0.5mg/ml if reconstituted with 0.2ml sterile DI water	100 ug

Bulk quote request

Availability	1-3 business days
Species Reactivity	Human
Format	Antigen affinity purified
Clonality	Polyclonal (rabbit origin)
Isotype	Rabbit IgG
Purity	Affinity purified
Buffer	Lyophilized from 1X PBS with 2% Trehalose and 0.025% sodium azide
UniProt	P28562
Applications	Western Blot : 1-2ug/ml Flow Cytometry : 1-3ug/million cells
Limitations	This DUSP1 antibody is available for research use only.



Flow cytometry testing of human Caco-2 cells with DUSP1 antibody at 1ug/million cells (blocked with goat sera); Red=cells alone, Green=isotype control, Blue= DUSP1 antibody.



Western blot testing of human 1) U-87 MG, 2) HeLa and 3) A549 cell lysate with DUSP1 antibody. Predicted molecular weight ~39 kDa.

Description

Dual specificity protein phosphatase 1 is an enzyme that in humans is encoded by the DUSP1 gene. The protein encoded by this gene is a phosphatase with dual specificity for tyrosine and threonine. The encoded protein can dephosphorylate MAP kinase MAPK1/ERK2, which results in its involvement in several cellular processes. This protein appears to play an important role in the human cellular response to environmental stress as well as in the negative regulation of cellular proliferation. Finally, the encoded protein can make some solid tumors resistant to both chemotherapy and radiotherapy, making it a target for cancer therapy.

Application Notes

Optimal dilution of the DUSP1 antibody should be determined by the researcher.

Immunogen

Amino acids NAELRGRLLAGAYHAVVLLDERSAALD from the human protein were used as the immunogen for the DUSP1 antibody.

Storage

After reconstitution, the DUSP1 antibody can be stored for up to one month at 4°C. For long-term, aliquot and store at -20°C. Avoid repeated freezing and thawing.