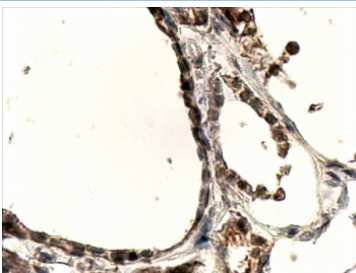


DUOX1 Antibody (R33823)

Catalog No.	Formulation	Size
R33823-100UG	0.5 mg/ml in 1X TBS, pH7.3, with 0.5% BSA (US sourced) and 0.02% sodium azide	100 ug

[Bulk quote request](#)

Availability	1-3 business days
Species Reactivity	Human
Format	Antigen affinity purified
Host	Goat
Clonality	Polyclonal (goat origin)
Isotype	Goat Ig
Purity	Antigen affinity
Gene ID	53905
Applications	Immunohistochemistry (FFPE) : 4-6ug/ml ELISA (peptide) LOD : 1:32000
Limitations	This DUOX1 antibody is available for research use only.



IHC testing of FFPE human thyroid gland with DUOX1 antibody at 4ug/ml. HIER: steamed with pH9 Tris/EDTA buffer, HRP-staining.

Description

Additional name(s) for this target protein: Dual oxidase 1

Application Notes

Optimal dilution of the DUOX1 antibody should be determined by the researcher.

Immunogen

Amino acids EKQRSCLHQTIVQ were used as the immunogen for this DUOX1 antibody.

Storage

Aliquot and store the DUOX1 antibody at -20°C.