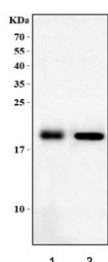


Dtr Antibody / Hbegf (RQ8280)

Catalog No.	Formulation	Size
RQ8280	0.5mg/ml if reconstituted with 0.2ml sterile DI water	100 ug

Bulk quote request

Availability	1-3 business days
Species Reactivity	Mouse, Rat
Format	Antigen affinity purified
Clonality	Polyclonal (rabbit origin)
Isotype	Rabbit IgG
Purity	Antigen affinity purified
Buffer	Lyophilized from 1X PBS with 2% Trehalose
UniProt	Q06186
Applications	Western Blot : 0.5-1ug/ml ELISA : 0.1-0.5ug/ml
Limitations	This Dtr antibody is available for research use only.



Western blot testing of 1) rat heart and 2) mouse heart tissue lysate with Dtr antibody. Predicted molecular weight ~23 kDa but may be observed at higher molecular weights due to glycosylation.

Description

Heparin-binding EGF-like growth factor (HB-EGF), also called Diphtheria toxin receptor (Dtr) is a member of the EGF family of proteins that in humans is encoded by the HBEGF gene. Enables epidermal growth factor receptor binding activity; growth factor activity; and heparin binding activity. Involved in positive regulation of keratinocyte migration; positive regulation of smooth muscle cell proliferation; and wound healing, spreading of epidermal cells. Acts upstream of or within several processes, including epidermal growth factor receptor signaling pathway; positive regulation of peptidyl-tyrosine phosphorylation; and regulation of heart contraction. Located in extracellular space. Is integral component of plasma membrane. Is expressed in several structures, including branchial arch; heart; oral region gland; telencephalon;

and tooth. Human ortholog(s) of this gene implicated in glomerulosclerosis and perinatal necrotizing enterocolitis. Orthologous to human HBEGF (heparin binding EGF like growth factor).

Application Notes

Optimal dilution of the Dtr antibody should be determined by the researcher.

Immunogen

An E.coli-derived mouse recombinant protein (D63-L148) was used as the immunogen for the Dtr antibody.

Storage

After reconstitution, the Dtr antibody can be stored for up to one month at 4oC. For long-term, aliquot and store at -20oC. Avoid repeated freezing and thawing.