

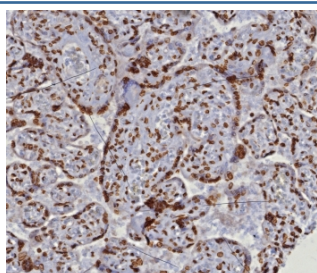
dsDNA Antibody / Double Stranded DNA [clone DSD/8204R] (V5321)

Catalog No.	Formulation	Size
V5321-100UG	0.2 mg/ml in 1X PBS with 0.1 mg/ml BSA (US sourced), 0.05% sodium azide	100 ug
V5321-20UG	0.2 mg/ml in 1X PBS with 0.1 mg/ml BSA (US sourced), 0.05% sodium azide	20 ug
V5321SAF-100UG	1 mg/ml in 1X PBS; BSA free, sodium azide free	100 ug

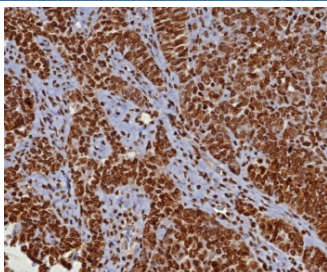
Recombinant **RABBIT MONOCLONAL**

[Bulk quote request](#)

Availability	1-3 business days
Species Reactivity	Human
Format	Purified
Host	Rabbit
Clonality	Recombinant Rabbit Monoclonal
Isotype	Rabbit IgG, kappa
Clone Name	DSD/8204R
Purity	Protein A affinity
UniProt	Not Applicable
Localization	Nucleus
Applications	Immunohistochemistry (FFPE) : 1-2ug/ml for 30 min at RT
Limitations	This dsDNA antibody is available for research use only.



IHC staining of FFPE human placental tissue with dsDNA antibody (clone DSD/8204R).
HIER: boil tissue sections in pH 9 10mM Tris with 1mM EDTA for 20 min and allow to cool before testing.



IHC staining of FFPE human ovarian cancer (serous) tissue with dsDNA antibody (clone DSD/8204R). HIER: boil tissue sections in pH 9 10mM Tris with 1mM EDTA for 20 min and allow to cool before testing.

Description

This mAb recognizes the double stranded DNA in human cells. It can be used to stain the nuclei in cell or tissue preparations and can be used as a nuclear marker in human cells. This mAb produces a homogeneous staining pattern in the nucleus of normal and malignant cells. Double Stranded deoxyribonucleic acid (ds DNA) is the genetic material of all cells and many viruses and is a polymer of nucleotides. The monomer consists of phosphorylated 2-deoxyribose N-glycosidically linked to one of four bases, adenine, cytosine, guanine or thymine. These are linked together by 3',5'-phosphodiester bridges. In the Watson-Crick double-helix model, two complementary strands are wound in a right-handed helix and held together by hydrogen bonds between complementary base pairs.

Application Notes

Optimal dilution of the dsDNA antibody should be determined by the researcher.

Immunogen

Burkitt's cell nuclei were used as the immunogen for the dsDNA antibody.

Storage

Aliquot the dsDNA antibody and store frozen at -20oC or colder. Avoid repeated freeze-thaw cycles.