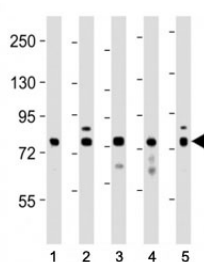


## DRP1 Antibody / Dynamin-related protein 1 / DNM1L (F53331)

Catalog No.	Formulation	Size
F53331-0.4ML	In 1X PBS, pH 7.4, with 0.09% sodium azide	0.4 ml
F53331-0.08ML	In 1X PBS, pH 7.4, with 0.09% sodium azide	0.08 ml

[Bulk quote request](#)

<b>Availability</b>	1-3 business days
<b>Species Reactivity</b>	Human, Mouse
<b>Format</b>	Antigen affinity purified
<b>Host</b>	Rabbit
<b>Clonality</b>	Polyclonal (rabbit origin)
<b>Isotype</b>	Rabbit Ig
<b>Purity</b>	Antigen affinity
<b>UniProt</b>	O00429
<b>Applications</b>	Western Blot : 1:1000
<b>Limitations</b>	This DRP1 antibody is available for research use only.



Western blot testing of DRP1 antibody at 1:1000 dilution and lysates: Lane 1: human heart; 2: LNCaP; 3: mouse NIH3T3; 4: rat PC12; 5: HeLa; Predicted molecular weight: 60-84 kDa (multiple isoforms).

## Description

Functions in mitochondrial and peroxisomal division. Mediates membrane fission through oligomerization into membrane-associated tubular structures that wrap around the scission site to constrict and sever the mitochondrial membrane through a GTP hydrolysis-dependent mechanism. Through its function in mitochondrial division, ensures the survival of at least some types of postmitotic neurons, including Purkinje cells, by suppressing oxidative damage. Required for normal brain development, including that of cerebellum. [UniProt]

## Application Notes

Titration of the DRP1 antibody may be required due to differences in protocols and secondary/substrate sensitivity.

## **Immunogen**

This DRP1 antibody was produced from a rabbit immunized with a KLH conjugated synthetic peptide between 557-590 amino acids from the C-terminal region of human DRP1/DNM1L.

## **Storage**

Aliquot the DRP1 antibody and store frozen at -20oC or colder. Avoid repeated freeze-thaw cycles.