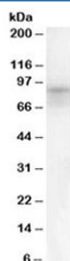


DPP10 Antibody (R33415)

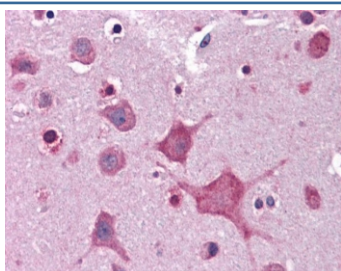
Catalog No.	Formulation	Size
R33415-100UG	0.5 mg/ml in 1X TBS, pH7.3, with 0.5% BSA (US sourced) and 0.02% sodium azide	100 ug

[Bulk quote request](#)

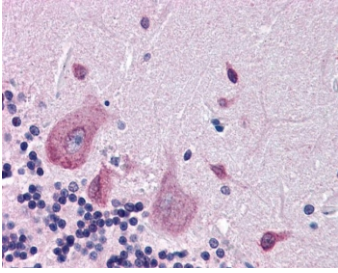
Availability	1-3 business days
Species Reactivity	Human
Predicted Reactivity	Dog, Cow
Format	Antigen affinity purified
Clonality	Polyclonal (goat origin)
Isotype	Goat Ig
Purity	Antigen affinity
Gene ID	57628
Applications	Western Blot : 0.1-0.3ug/ml IHC (FFPE) : 3.75ug/ml ELISA (peptide) LOD : 1:32000
Limitations	This DPP10 antibody is available for research use only.



Western blot testing of human bone marrow lysate with DPP10 antibody at 0.1ug/ml.
Predicted molecular weight: ~90 kDa.



IHC testing of FFPE human cortex (brain) tissue with DPP10 antibody at 3.75ug/ml.
Required HIER: steamed antigen retrieval with pH6 citrate buffer; AP-staining.



IHC testing of FFPE human cerebellum tissue with DPP10 antibody at 3.75ug/ml.
Required HIER: steamed antigen retrieval with pH6 citrate buffer; AP-staining.

Description

Additional name(s) for this target protein: Dipeptidylpeptidase 10

Application Notes

Optimal dilution of the DPP10 antibody should be determined by the researcher.

Immunogen

Amino acids DEGHNVSEKSKYHL were used as the immunogen for this DPP10 antibody.

Storage

Aliquot and store the DPP10 antibody at -20oC.