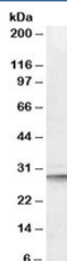


## DPM1 Antibody (R35593)

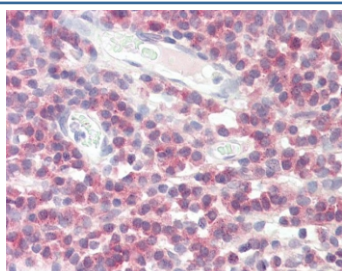
Catalog No.	Formulation	Size
R35593-100UG	0.5 mg/ml in 1X TBS, pH7.3, with 0.5% BSA (US sourced) and 0.02% sodium azide	100 ug

[Bulk quote request](#)

Availability	1-3 business days
Species Reactivity	Human
Format	Antigen affinity purified
Host	Goat
Clonality	Polyclonal (goat origin)
Isotype	Goat Ig
Purity	Antigen affinity
Gene ID	8813
Applications	Western Blot : 0.1-0.3ug/ml IHC (FFPE) : 3.75ug/ml ELISA (peptide) LOD : 1:32000
Limitations	This DPM1 antibody is available for research use only.



Western blot testing of human liver lysate with DPM1 antibody at 0.1ug/ml. Predicted molecular weight: ~29 kDa.



IHC testing of FFPE human tonsil tissue with DPM1 antibody at 3.75ug/ml. Required HIER: steamed antigen retrieval with pH6 citrate buffer; AP-staining.

## Description

Additional name(s) for this target protein: Dolichyl-phosphate mannosyltransferase polypeptide 1

## Application Notes

Optimal dilution of the DPM1 antibody should be determined by the researcher.

## Immunogen

Amino acids RELEVRSPRQNKYS were used as the immunogen for this DPM1 antibody.

## Storage

Aliquot and store the DPM1 antibody at -20oC.