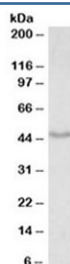


Doublecortin Antibody (R34677)

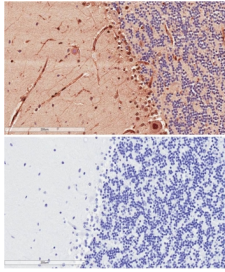
Catalog No.	Formulation	Size
R34677-100UG	0.5 mg/ml in 1X TBS, pH7.3, with 0.5% BSA (US sourced) and 0.02% sodium azide	100 ug

[Bulk quote request](#)

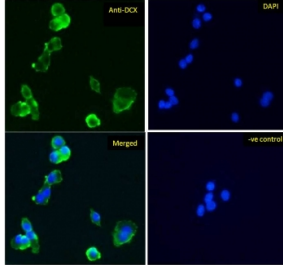
Availability	1-3 business days
Species Reactivity	Human, Mouse
Predicted Reactivity	Rat, Dog, Pig, Cow
Format	Antigen affinity purified
Host	Goat
Clonality	Polyclonal (goat origin)
Isotype	Goat Ig
Purity	Antigen affinity
Gene ID	1641
Localization	Cytoplasmic
Applications	Western Blot : 0.01-0.03ug/ml IHC (FFPE) : 2-4ug/ml IF/ICC : 5ug/ml ELISA (peptide) LOD : 1:32000
Limitations	This Doublecortin antibody is available for research use only.



Western blot testing of mouse fetal brain lysate with Doublecortin antibody at 0.01ug/ml.
Predicted molecular weight: 40-50 kDa.



IHC testing of FFPE human cerebellum tissue with (top) and without (bottom) Doublecortin antibody at 2ug/ml. HIER: steam section in pH6 citrate buffer for 20 min.



IF/ICC testing of human HepG2 cells with Alexa Fluor 488 secondary (1ug/ml) and Doublecortin antibody (green, 5ug/ml). Blue = DAPI nuclear counterstain.

Description

Additional name(s) for this target protein: DBCN, DC; DCX

Application Notes

Optimal dilution of the Doublecortin antibody should be determined by the researcher.

Immunogen

Amino acids KTSANMKAPQS were used as the immunogen for this Doublecortin antibody.

Storage

Aliquot and store the Doublecortin antibody at -20oC.