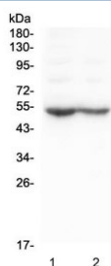


Dopamine Receptor D5 Antibody (R31327)

Catalog No.	Formulation	Size
R31327	0.5mg/ml if reconstituted with 0.2ml sterile DI water	100 ug

Bulk quote request

Availability	1-3 business days
Species Reactivity	Mouse, Rat
Format	Antigen affinity purified
Clonality	Polyclonal (rabbit origin)
Isotype	Rabbit IgG
Purity	Antigen affinity
Buffer	Lyophilized from 1X PBS with 2.5% BSA and 0.025% sodium azide/thimerosal
UniProt	Q8BLD9
Applications	Western Blot : 0.5-1ug/ml
Limitations	This Dopamine Receptor D5 antibody is available for research use only.



Western blot testing of 1) rat brain and 2) mouse brain lysate. Predicted molecular weight ~53 kDa.

Description

D(1B) dopamine receptor D5, also called DRD1B or DRD1L2 is a protein that in humans is encoded by the DRD5 gene. This gene is mapped to 4p16.1. This gene encodes the D5 subtype of the dopamine receptor. The D5 subtype is a G-protein coupled receptor which stimulates adenylyl cyclase. This receptor is expressed in neurons in the limbic regions of the brain. It has a 10-fold higher affinity for dopamine than the D1 subtype. Pseudogenes related to this gene reside on chromosomes 1 and 2. Compared with DRD1, DRD5 displayed a higher affinity for dopamine and was able to stimulate a biphasic rather than a monophasic intracellular accumulation of cAMP.

Application Notes

The stated application concentrations are suggested starting amounts. Titration of the Dopamine Receptor D5 antibody may be required due to differences in protocols and secondary/substrate sensitivity.

Immunogen

An amino acid sequence from the C-terminus of mouse DRD5 (LISYNQDTVHREIAAAYVH) was used as the immunogen for this Dopamine Receptor D5 antibody.

Storage

After reconstitution, the Dopamine Receptor D5 antibody can be stored for up to one month at 4°C. For long-term, aliquot and store at -20°C. Avoid repeated freezing and thawing.