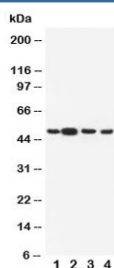


Dopamine Receptor D3 Antibody / DRD3 (R30661)

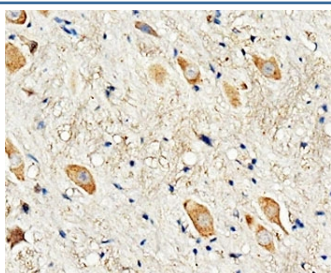
Catalog No.	Formulation	Size
R30661	0.5mg/ml if reconstituted with 0.2ml sterile DI water	100 ug

Bulk quote request

Availability	1-3 business days
Species Reactivity	Human, Mouse, Rat
Format	Antigen affinity purified
Clonality	Polyclonal (rabbit origin)
Isotype	Rabbit IgG
Purity	Antigen affinity
Buffer	Lyophilized from 1X PBS with 2.5% BSA and 0.025% sodium azide/thimerosal
UniProt	P35462
Applications	Western Blot : 0.5-1ug/ml IHC (FFPE) : 0.5-1ug/ml
Limitations	This Dopamine Receptor D3 antibody is available for research use only.



Western blot testing of Dopamine Receptor D3 antibody and Lane 1: rat testis; 2: rat brain; 3: human U-87 MG; 4: human HeLa cell lysate. Predicted molecular weight ~44 kDa.



IHC-P: Dopamine Receptor D3 antibody testing of rat brain tissue

Description

DRD3 is a dopamine receptor that differs in its pharmacology and signaling system from the D1 and D2 receptors and represents both an autoreceptor and a postsynaptic receptor. DRD3 is localized to limbic areas of the brain, which are associated with cognitive, emotional, and endocrine functions. The DRD3 gene, which is mapped to chromosome 3, is like the DRD2 gene but unlike most other members of this superfamily and it contains introns, 5 in number. The position of 2 of the introns corresponds to that of introns in DRD2. The D3 receptor appeared to mediate some of the effects of antipsychotic drugs and drugs used in the treatment of Parkinson disease, which were previously thought to interact only with D2 receptors.

Application Notes

The stated application concentrations are suggested starting amounts. Titration of the Dopamine Receptor D3 antibody may be required due to differences in protocols and secondary/substrate sensitivity.

Immunogen

An amino acid sequence from the C-terminus of human Dopamine Receptor D3 (NTHCQTCHVSPELYSA) was used as the immunogen for this Dopamine Receptor D3 antibody.

Storage

After reconstitution, the Dopamine Receptor D3 antibody can be stored for up to one month at 4°C. For long-term, aliquot and store at -20°C. Avoid repeated freezing and thawing.