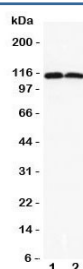


DOG1 Antibody (TMEM16A) (R31414)

Catalog No.	Formulation	Size
R31414	0.5mg/ml if reconstituted with 0.2ml sterile DI water	100 ug

Bulk quote request

Availability	1-3 business days
Species Reactivity	Human, Mouse, Rat
Format	Antigen affinity purified
Host	Rabbit
Clonality	Polyclonal (rabbit origin)
Isotype	Rabbit IgG
Purity	Antigen affinity
Buffer	Lyophilized from 1X PBS with 2.5% BSA and 0.025% sodium azide/thimerosal
UniProt	Q5XXA6
Applications	Western Blot : 0.5-1ug/ml
Limitations	This DOG1 antibody is available for research use only.



Western blot testing of DOG1 antibody and Lane 1) rat liver; 2) rat skeletal muscle lysate. Expected molecular weight 74-114 kDa but may be observed at higher molecular weights due to glycosylation.

Description

Anoctamin-1 (ANO1), also known as oral cancer overexpressed 2 (ORAOV2), Tumor-amplified and overexpressed sequence 2 (TMEM16A), and Discovered on gastrointestinal stromal tumors protein 1 (DOG1) is a protein that in humans is encoded by the ANO1 gene. This gene belongs to a family of membrane proteins containing 8 transmembrane segments, and it is mapped to 11q13.3. ANO1 is a candidate calcium-activated chloride channel that mediates receptor-activated chloride currents in diverse physiologic processes, and it is thought to be responsible for a voltage-sensitive calcium-activated chloride current. Its overexpression was reported in esophageal squamous cell carcinoma and breast cancer progression Crofelemer, an antidiarrhoeal, inhibits this channel. ANO1/DOG1 has eight transmembrane domains,

its pore is large and non-selective, allowing other negatively charged species to permeate.

Application Notes

The stated application concentrations are suggested starting amounts. Titration of the DOG1 antibody may be required due to differences in protocols and secondary/substrate sensitivity.

Immunogen

An amino acid sequence from the C-terminus of human ANO1/TMEM16A/DOG1 (KVLMVELFMREEQDKQQ) was used as the immunogen for this DOG1 antibody.

Storage

After reconstitution, the DOG1 antibody can be stored for up to one month at 4°C. For long-term, aliquot and store at -20°C. Avoid repeated freezing and thawing.