

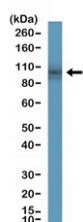
DOG1 Antibody / TMEM16A / ANO1 [clone RM440] (R20455)

Catalog No.	Formulation	Size
R20455-0.1ML	Antibody in PBS with 50% glycerol, 1% BSA and 0.09% sodium azide	100 ul

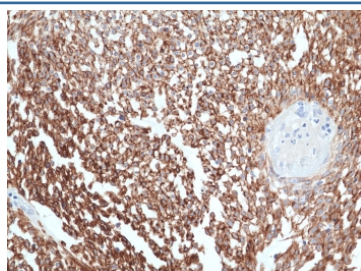
Recombinant **RABBIT MONOCLONAL**

[Bulk quote request](#)

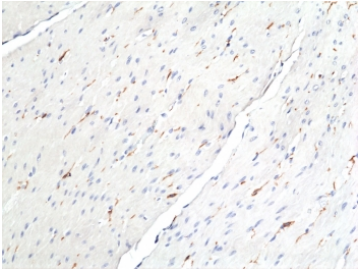
Availability	1-3 business days
Species Reactivity	Human
Format	Purified
Clonality	Recombinant Rabbit Monoclonal
Isotype	Rabbit IgG
Clone Name	RM440
Purity	Protein A purified from animal origin-free supernatant
UniProt	Q5XXA6
Applications	Immunohistochemistry (FFPE) : 1:50-1:100 Western Blot : 1:100-1:200
Limitations	This recombinant DOG1 antibody is available for research use only.



Western blot testing of human small intestine tissue with recombinant DOG1 antibody at 1:200 dilution. Expected molecular weight 74-114 kDa but may be observed at higher molecular weights due to glycosylation.



IHC staining of FFPE human gastrointestinal stroma tissue with recombinant DOG1 antibody at 1:100.



IHC staining of FFPE human colon tissue with recombinant DOG1 antibody at 1:100. DOG1-positive cells are interstitial cells of Cajal (ICCs) located within the muscle layer.

Description

This antibody reacts to ANO1 / DOG1 / TMEM16A.

Application Notes

The stated application concentrations are suggested starting points. Titration of the recombinant DOG1 antibody may be required due to differences in protocols and secondary/substrate sensitivity.

Immunogen

Recombinant human DOG1 protein was used as the immunogen for the recombinant DOG1 antibody.

Storage

Store the recombinant DOG1 antibody at -20oC.