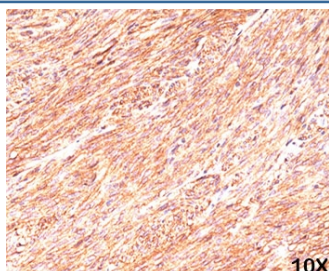


## DOG1 Antibody [clone tDAN4] (V7053)

Catalog No.	Formulation	Size
V7053-100UG	0.2 mg/ml in 1X PBS with 0.1 mg/ml BSA (US sourced) and 0.05% sodium azide	100 ug
V7053-20UG	0.2 mg/ml in 1X PBS with 0.1 mg/ml BSA (US sourced) and 0.05% sodium azide	20 ug
V7053SAF-100UG	1 mg/ml in 1X PBS; BSA free, sodium azide free	100 ug
V7053IHC-7ML	Prediluted in 1X PBS with 0.1 mg/ml BSA (US sourced) and 0.05% sodium azide; *For IHC use only*	7 ml

[Bulk quote request](#)

<b>Species Reactivity</b>	Human
<b>Format</b>	Purified
<b>Host</b>	Mouse
<b>Clonality</b>	Monoclonal (mouse origin)
<b>Isotype</b>	Mouse IgG1, kappa
<b>Clone Name</b>	tDAN4
<b>Purity</b>	Protein G affinity chromatography
<b>Gene ID</b>	55107
<b>Localization</b>	Cell Surface and Cytoplasmic
<b>Applications</b>	Immunohistochemistry (FFPE) : 1-2ug/ml for 30 min at RT Prediluted IHC Only Format : incubate for 30 min at RT (1)
<b>Limitations</b>	This DOG1 antibody is available for research use only.



IHC testing of human gastrointestinal stromal tumor (GIST) and DOG1 antibody (clone tDAN4). Required HIER: boil tissue sections in pH 9 10mM Tris with 1mM EDTA for 10-20 min.

## Description

Expression of TMEM16A (DOG1) protein is elevated in the gastrointestinal stromal tumors (GIST's), c-kit signaling-driven mesenchymal tumors of the GI tract. It is rarely expressed in other soft tissue tumors, which, due to appearance, may be difficult to diagnose. Immunoreactivity for DOG1 has been reported in 97.8 percent of scorable GIST's, including all c-kit negative GIST's. Overexpression has been suggested to aid in the identification of GISTs, including Platelet-Derived Growth Factor Receptor Alpha (PDGFR alpha) mutants that fail to express c-kit antigen. The overall sensitivity of TMEM16A and c-kit in GIST's is nearly identical: 94.4% vs. 94.7%.

## Application Notes

Titering of the DOG1 antibody may be required for optimal performance.

1. The prediluted format is supplied in a dropper bottle and is optimized for use in IHC. After epitope retrieval step (if required), drip mAb solution onto the tissue section and incubate at RT for 30 min.

## Immunogen

Recombinant human protein was used as the immunogen for this DOG1 antibody.

## Storage

Store the DOG1 antibody at 2-8oC (with azide) or aliquot and store at -20oC or colder (without azide).