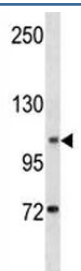


DOG1 Antibody (F46427)

Catalog No.	Formulation	Size
F46427-0.4ML	In 1X PBS, pH 7.4, with 0.09% sodium azide	0.4 ml
F46427-0.08ML	In 1X PBS, pH 7.4, with 0.09% sodium azide	0.08 ml

[Bulk quote request](#)

Availability	1-3 business days
Species Reactivity	Human
Format	Antigen affinity purified
Clonality	Polyclonal (rabbit origin)
Isotype	Rabbit Ig
Purity	Antigen affinity
UniProt	Q5XXA6
Applications	Western Blot : 1:1000
Limitations	This DOG1 antibody is available for research use only.



DOG1 antibody western blot analysis in human K562 lysate. Expected molecular weight 74-114 kDa but may be observed at higher molecular weights due to glycosylation.

Description

ANO1 acts as a calcium-activated chloride channel. Required for normal tracheal development (By similarity).

Application Notes

Titration of the DOG1 antibody may be required due to differences in protocols and secondary/substrate sensitivity.

Immunogen

A portion of amino acids 453-482 from the human protein was used as the immunogen for this DOG1 antibody.

Storage

Aliquot the DOG1 antibody and store frozen at -20oC or colder. Avoid repeated freeze-thaw cycles.