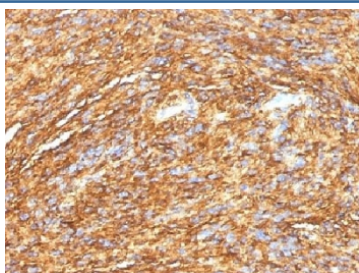


## DOG 1 Antibody [clone DG1/1484] (V3335)

Catalog No.	Formulation	Size
V3335-100UG	0.2 mg/ml in 1X PBS with 0.1 mg/ml BSA (US sourced) and 0.05% sodium azide	100 ug
V3335-20UG	0.2 mg/ml in 1X PBS with 0.1 mg/ml BSA (US sourced) and 0.05% sodium azide	20 ug
V3335SAF-100UG	1 mg/ml in 1X PBS; BSA free, sodium azide free	100 ug

[Bulk quote request](#)

<b>Species Reactivity</b>	Human
<b>Format</b>	Purified
<b>Host</b>	Mouse
<b>Clonality</b>	Monoclonal (mouse origin)
<b>Isotype</b>	Mouse IgG2b, kappa
<b>Clone Name</b>	DG1/1484
<b>Purity</b>	Protein G affinity chromatography
<b>UniProt</b>	Q5XXA6
<b>Gene ID</b>	55107
<b>Localization</b>	Cell Surface and Cytoplasmic
<b>Applications</b>	Immunohistochemistry (FFPE) : 1-2ug/ml for 30 min at RT
<b>Limitations</b>	This DOG 1 antibody is available for research use only.

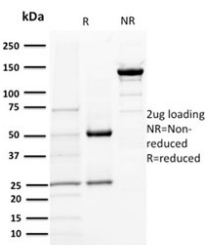


IHC testing of FFPE human gastrointestinal stromal tumor (GIST) with DOG 1 antibody (DG1/1484). Required HIER: boil tissue sections in pH 9 10mM Tris with 1mM EDTA for 10-20 min.

#### Human Protein Microarray Specificity Validated



Analysis of HuProt(TM) microarray containing more than 19,000 full-length human proteins using DOG 1 antibody (clone DG1/1484). These results demonstrate the foremost specificity of the DG1/1484 mAb. Z- and S- score: The Z-score represents the strength of a signal that an antibody (in combination with a fluorescently-tagged anti-IgG secondary Ab) produces when binding to a particular protein on the HuProt(TM) array. Z-scores are described in units of standard deviations (SD's) above the mean value of all signals generated on that array. If the targets on the HuProt(TM) are arranged in descending order of the Z-score, the S-score is the difference (also in units of SD's) between the Z-scores. The S-score therefore represents the relative target specificity of an Ab to its intended target.



SDS-PAGE analysis of purified, BSA-free DOG 1 antibody (clone DG1/1484) as confirmation of integrity and purity.

## Description

DOG 1 is expressed in the human gastrointestinal epithelium and is highly expressed in the gastrointestinal interstitial cells of Cajal, where it plays an important role in epithelial chloride secretion mediating intestinal motility. [Wiki]

## Application Notes

The concentration stated for each application is a general starting point. Variations in protocols, secondaries and substrates may require the DOG 1 antibody to be titrated up or down for optimal performance.

## Immunogen

A recombinant human protein corresponding to amino acids 2-101 of human DOG1/ANO1 was used as the immunogen for this DOG 1 antibody.

## Storage

Store the DOG 1 antibody at 2-8oC (with azide) or aliquot and store at -20oC or colder (without azide).

## References (1)