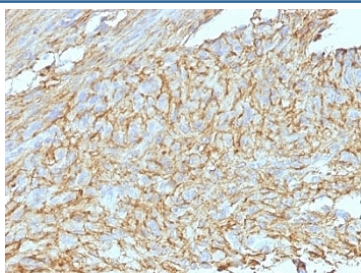


DOG-1 Antibody Cocktail [clone DG1/447 + DOG-1.1] (V3159)

Catalog No.	Formulation	Size
V3159-100UG	0.2 mg/ml in 1X PBS with 0.1 mg/ml BSA (US sourced) and 0.05% sodium azide	100 ug
V3159-20UG	0.2 mg/ml in 1X PBS with 0.1 mg/ml BSA (US sourced) and 0.05% sodium azide	20 ug
V3159SAF-100UG	1 mg/ml in 1X PBS; BSA free, sodium azide free	100 ug
V3159IHC-7ML	Prediluted in 1X PBS with 0.1 mg/ml BSA (US sourced) and 0.05% sodium azide; *For IHC use only*	7 ml

[Bulk quote request](#)

Availability	1-3 business days
Species Reactivity	Human
Format	Purified
Host	Mouse
Clonality	Monoclonal (mouse origin)
Isotype	Mouse IgG1, kappa
Clone Name	DG1/447 + DOG-1.1
Purity	Protein G affinity chromatography
UniProt	Q5XXA6
Localization	Cell Surface and Cytoplasm
Applications	Immunohistochemistry (FFPE) : 1-2ug/ml for 30 min at RT
Limitations	This DOG-1 antibody cocktail is available for research use only.



IHC: Formalin-fixed, paraffin-embedded human GIST stained with DOG1 antibody cocktail.

Description

Expression of DOG-1 protein is elevated in the gastrointestinal stromal tumors (GISTs), c-kit signaling-driven mesenchymal tumors of the GI tract. DOG-1 is rarely expressed in other soft tissue tumors, which, due to appearance, may be difficult to diagnose. Immunoreactivity for DOG-1 has been reported in 97.8 percent of scorable GISTs, including all c-kit negative GISTs. Overexpression of DOG-1 has been suggested to aid in the identification of GISTs, including Platelet-Derived Growth Factor Receptor Alpha mutants that fail to express c-kit antigen. The overall sensitivity of DOG1 and c-kit in GISTs is nearly identical: 94.4% vs. 94.7%.

Application Notes

The optimal dilution of the DOG-1 antibody for each application should be determined by the researcher.

1. Staining of formalin-fixed tissues requires boiling tissue sections in pH 9 10mM Tris with 1mM EDTA for 10-20 min followed by cooling at RT for 20 minutes.
2. The prediluted format is supplied in a dropper bottle and is optimized for use in IHC. After epitope retrieval step (if required), drip mAb solution onto the tissue section and incubate at RT for 30 min.

Immunogen

Recombinant human DOG1 protein (DG1/447) and amino acids 904-986 (DOG-1.1) were used as the immunogens for this DOG-1 antibody cocktail.

Storage

Store the DOG-1 antibody cocktail at 2-8oC (with azide) or aliquot and store at -20oC or colder (without azide).