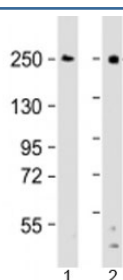


## DOCK8 Antibody (F53863)

Catalog No.	Formulation	Size
F53863-0.2ML	In 1X PBS, pH 7.4, with 0.09% sodium azide	0.2 ml
F53863-0.05ML	In 1X PBS, pH 7.4, with 0.09% sodium azide	0.05 ml

[Bulk quote request](#)

<b>Availability</b>	1-3 business days
<b>Species Reactivity</b>	Human
<b>Format</b>	Antigen affinity purified
<b>Clonality</b>	Polyclonal (rabbit origin)
<b>Isotype</b>	Rabbit Ig
<b>Purity</b>	Antigen affinity
<b>UniProt</b>	Q8NF50
<b>Applications</b>	Western Blot : 1:1000-2000
<b>Limitations</b>	This DOCK8 antibody is available for research use only.



Western blot testing of human 1) Ramos and 2) THP-1 cell lysate with DOCK8 antibody at 1:2000. Predicted molecular weight: 239 kDa.

## Description

Dedicator of cytokinesis protein 8 is a potential guanine nucleotide exchange factor (GEF). GEF proteins activate some small GTPases by exchanging bound GDP for free GTP (By similarity).

## Application Notes

Titration of the DOCK8 antibody may be required due to differences in protocols and secondary/substrate sensitivity.

## Immunogen

A portion of amino acids 2056-2090 from the human protein was used as the immunogen for the DOCK8 antibody.

## Storage

Aliquot the DOCK8 antibody and store frozen at -20oC or colder. Avoid repeated freeze-thaw cycles.