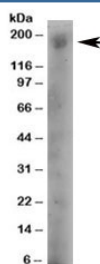


DOCK1 Antibody (R36308)

Catalog No.	Formulation	Size
R36308-100UG	0.5 mg/ml in 1X TBS, pH7.3, with 0.5% BSA (US sourced) and 0.02% sodium azide	100 ug

[Bulk quote request](#)

Availability	1-3 business days
Species Reactivity	Human
Predicted Reactivity	Cow, Dog, Mouse, Pig, Rat
Format	Antigen affinity purified
Clonality	Polyclonal (goat origin)
Isotype	Goat Ig
Purity	Antigen affinity
Gene ID	1793
Applications	Western Blot : 4-8ug/ml
Limitations	This DOCK1 antibody is available for research use only.



Western blot testing of human A431 lysate with DOCK1 antibody at 4ug/ml. Predicted molecular weight: 215kDa, routinely observed at 180~215kDa.

Description

Additional name(s) for this target protein: Dedicator of cyto-kinesis 1; DOCK180

Application Notes

Optimal dilution of the DOCK1 antibody should be determined by the researcher.

Immunogen

Amino acids TTRKQTSVDSGIVQ were used as the immunogen for this DOCK1 antibody.

Storage

Aliquot and store the DOCK1 antibody at -20oC.