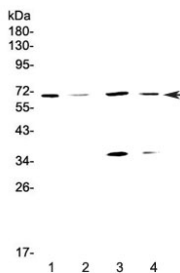


DNA Polymerase lambda Antibody / POLL (RQ4359)

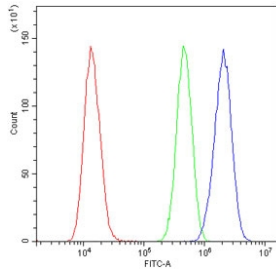
Catalog No.	Formulation	Size
RQ4359	0.5mg/ml if reconstituted with 0.2ml sterile DI water	100 ug

[Bulk quote request](#)

Availability	1-3 business days
Species Reactivity	Human
Format	Antigen affinity purified
Host	Rabbit
Clonality	Polyclonal (rabbit origin)
Isotype	Rabbit IgG
Purity	Antigen affinity purified
Buffer	Lyophilized from 1X PBS with 2% Trehalose and 0.025% sodium azide
UniProt	Q9UGP5
Localization	Cytoplasmic
Applications	Western Blot : 0.5-1ug/ml Flow Cytometry : 1-3ug/10 ⁶ cells Direct ELISA : 0.1-0.5ug/ml
Limitations	This DNA Polymerase lambda antibody is available for research use only.



Western blot testing of human 1) HeLa, 2) COLO-320, 3) MCF7 and 4) HepG2 cell lysate with DNA Polymerase lambda antibody at 0.5ug/ml. Predicted molecular weight ~63 kDa, also observed at ~68 kDa.



Flow cytometry testing of human U-2 OS cells with DNA Polymerase lambda antibody at $1\mu\text{g}/10^6$ cells (blocked with goat sera); Red=cells alone, Green=isotype control, Blue=DNA Polymerase lambda antibody.

Description

DNA polymerase lambda, also known as POLL, is a protein found in eukaryotes. In humans, it is encoded by the POLLA gene. POLL has 5-prime-deoxyribose-5-phosphate lyase activity and strand-displacement synthesis activity on gapped DNA substrates, suggesting that POLL participates in short- and long-patch base excision repair. POLL is widely expressed, with abundant expression in pachytene spermatocytes of testis and in ovary.

Application Notes

Optimal dilution of the DNA Polymerase lambda antibody should be determined by the researcher.

Immunogen

A recombinant human protein corresponding to amino acids K307-N407 was used as the immunogen for the DNA Polymerase lambda antibody.

Storage

After reconstitution, the DNA Polymerase lambda antibody can be stored for up to one month at 4°C . For long-term, aliquot and store at -20°C . Avoid repeated freezing and thawing.