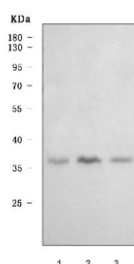


DNA-3-methyladenine glycosylase Antibody / MPG / AAG (RQ7265)

Catalog No.	Formulation	Size
RQ7265	0.5mg/ml if reconstituted with 0.2ml sterile DI water	100 ug

Bulk quote request

Availability	1-3 business days
Species Reactivity	Human
Format	Antigen affinity purified
Clonality	Polyclonal (rabbit origin)
Isotype	Rabbit IgG
Purity	Antigen affinity purified
Buffer	Lyophilized from 1X PBS with 2% Trehalose
UniProt	P29372
Applications	Western Blot : 0.5-1ug/ml Direct ELISA : 0.1-0.5ug/ml
Limitations	This DNA-3-methyladenine glycosylase antibody is available for research use only.



Western blot testing of human 1) HepG2, 2) Jurkat and 3) 293T cell lysate with DNA-3-methyladenine glycosylase antibody. Predicted molecular weight ~33 kDa.

Description

MPG (N-methylpurine-DNA glycosylase) also known as MDG, 3-METHYLADENINE DNA GLYCOSYLASE, 3MeAde DNA GLYCOSYLASE, AAG and APNG is a protein expressed in all cell lines and tissues examined, but was found at particularly high levels in a colon adenocarcinoma cell line (HT29). The completely characterized human MPG gene was found to span 7 to 8 kb of genomic DNA and to be localized 75 kb upstream of the embryonic zeta-globin gene. To assess the contribution of Apng to the repair of several mutagenic lesions in vivo, Hang et al. (1997) biochemically analyzed cell-free extracts of tissues from mice with a targeted deletion of the Apng gene. Following treatment with DNA-methylating agents, increased persistence of 7-methylguanine (meG) was found in liver sections of APNG knockout mice.

in comparison with wildtype mice, demonstrating an in vivo phenotype for the APNG-null animals.

Application Notes

Optimal dilution of the DNA-3-methyladenine glycosylase antibody should be determined by the researcher.

Immunogen

Recombinant human protein (amino acids Q20-A298) was used as the immunogen for the DNA-3-methyladenine glycosylase antibody.

Storage

After reconstitution, the DNA-3-methyladenine glycosylase antibody can be stored for up to one month at 4°C. For long-term, aliquot and store at -20°C. Avoid repeated freezing and thawing.