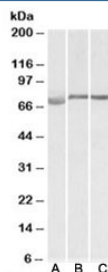


DMTF1 Antibody (R33379)

Catalog No.	Formulation	Size
R33379-100UG	0.5 mg/ml in 1X TBS, pH7.3, with 0.5% BSA (US sourced) and 0.02% sodium azide	100 ug

[Bulk quote request](#)

Availability	1-3 business days
Species Reactivity	Human, Mouse, Rat
Predicted Reactivity	Cow, Dog, Pig
Format	Antigen affinity purified
Host	Goat
Clonality	Polyclonal (goat origin)
Isotype	Goat Ig
Purity	Antigen affinity
Gene ID	9988
Applications	Western Blot : 1-3ug/ml ELISA (peptide) LOD : 1:8000
Limitations	This DMTF1 antibody is available for research use only.



Western blot testing of human [A], mouse [B] and rat [C] testis lysate with DMTF1 antibody at 1ug/ml. Predicted molecular weight: ~84/75kDa (isoforms a/b).

Description

Additional name(s) for this target protein: Cyclin D binding myb-like transcription factor 1

Application Notes

Optimal dilution of the DMTF1 antibody should be determined by the researcher.

Immunogen

Amino acids DAHVSKFSDQNSTE were used as the immunogen for this DMTF1 antibody. This sequence is common to isoforms a and b.

Storage

Aliquot and store the DMTF1 antibody at -20oC.