

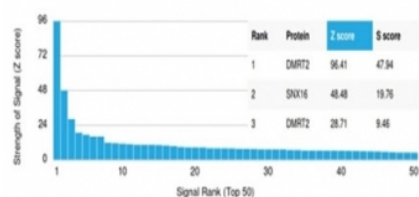
DMRT2 Antibody [clone PCRP-DMRT2-1B11] (V9601)

Catalog No.	Formulation	Size
V9601-100UG	0.2 mg/ml in 1X PBS with 0.1 mg/ml BSA (US sourced), 0.05% sodium azide	100 ug
V9601-20UG	0.2 mg/ml in 1X PBS with 0.1 mg/ml BSA (US sourced), 0.05% sodium azide	20 ug
V9601SAF-100UG	1 mg/ml in 1X PBS; BSA free, sodium azide free	100 ug

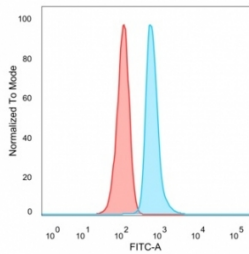
[Bulk quote request](#)

Availability	1-3 business days
Species Reactivity	Human
Format	Purified
Host	Mouse
Clonality	Monoclonal (mouse origin)
Isotype	Mouse IgG2b
Clone Name	PCRP-DMRT2-1B11
Purity	Protein A/G affinity
UniProt	Q9Y5R5
Localization	Nucleus
Applications	Flow Cytometry : 1-2ug/million cells Western Blot : 1-2ug/ml
Limitations	This DMRT2 antibody is available for research use only.

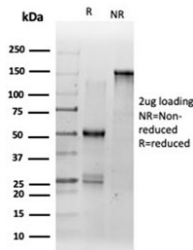
Human Protein Microarray Specificity Validation



Analysis of HuProt(TM) microarray containing more than 19,000 full-length human proteins using DMRT2 antibody (clone PCRP-DMRT2-1B11). These results demonstrate the foremost specificity of the PCRP-DMRT2-1B11 mAb. Z- and S- score: The Z-score represents the strength of a signal that an antibody (in combination with a fluorescently-tagged anti-IgG secondary Ab) produces when binding to a particular protein on the HuProt(TM) array. Z-scores are described in units of standard deviations (SD's) above the mean value of all signals generated on that array. If the targets on the HuProt(TM) are arranged in descending order of the Z-score, the S-score is the difference (also in units of SD's) between the Z-scores. The S-score therefore represents the relative target specificity of an Ab to its intended target.



FACS staining of PFA-fixed human HeLa cells with DMRT2 antibody (blue, clone PCRP-DMRT2-1B11) and isotype control (red).



SDS-PAGE analysis of purified, BSA-free DMRT2 antibody (clone PCRP-DMRT2-1B11) as confirmation of integrity and purity.

Description

The protein encoded by this gene belongs to the DMRT gene family, sharing a DM DNA-binding domain with *Drosophila* (*dsx*) and *C. elegans* *mab3*, genes involved in sex determination in these organisms. Also, this gene is located in a region of the human genome (chromosome 9p24.3) associated with gonadal dysgenesis and XY sex reversal. Hence this gene is one of the candidates for sex-determining gene(s) on chr 9. Transcriptional activator that directly regulates early activation of the myogenic determination gene MYF5 by binding in a sequence-specific manner to the early epaxial enhancer element of it. Involved in somitogenesis during embryogenesis and somite development and differentiation into sclerotome and dermomyotome. Required for the initiation and/or maintenance of proper organization of the sclerotome, dermomyotome and myotome (By similarity).

Application Notes

Optimal dilution of the DMRT2 antibody should be determined by the researcher.

Immunogen

Recombinant full-length human DMRT2 protein was used as the immunogen for the DMRT2 antibody.

Storage

Aliquot the DMRT2 antibody and store frozen at -20oC or colder. Avoid repeated freeze-thaw cycles.