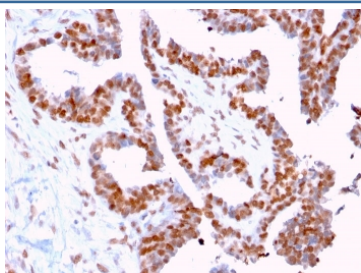


## DMC1 Antibody [clone 2H12/4] (V7680)

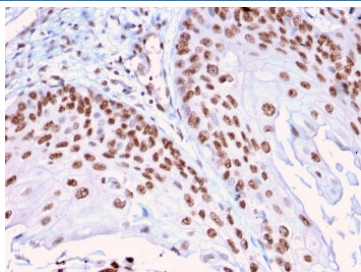
Catalog No.	Formulation	Size
V7680-100UG	0.2 mg/ml in 1X PBS with 0.1 mg/ml BSA (US sourced) and 0.05% sodium azide	100 ug
V7680-20UG	0.2 mg/ml in 1X PBS with 0.1 mg/ml BSA (US sourced) and 0.05% sodium azide	20 ug
V7680SAF-100UG	1 mg/ml in 1X PBS; BSA free, sodium azide free	100 ug

**Bulk quote request**

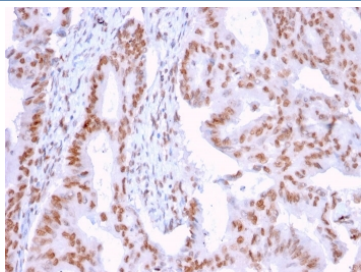
<b>Availability</b>	1-3 business days
<b>Species Reactivity</b>	Human, Mouse, Rat
<b>Format</b>	Purified
<b>Clonality</b>	Monoclonal (mouse origin)
<b>Isotype</b>	Mouse IgG2a, kappa
<b>Clone Name</b>	2H12/4
<b>Purity</b>	Protein G affinity chromatography
<b>UniProt</b>	Q14565
<b>Localization</b>	Nuclear
<b>Applications</b>	Immunofluorescence : 1-2ug/ml Western Blot : 1-2ug/ml Immunohistochemistry (FFPE) : 1-2ug/ml
<b>Limitations</b>	This DMC1 antibody is available for research use only.



IHC staining of FFPE human prostate carcinoma with DMC1 antibody (clone 2H12/4).  
HIER: boil tissue sections in pH 9 10mM Tris with 1mM EDTA for 10-20 min and allow to cool before testing.



IHC staining of FFPE human cervical carcinoma with DMC1 antibody (clone 2H12/4).  
HIER: boil tissue sections in pH 9 10mM Tris with 1mM EDTA for 10-20 min and allow to cool before testing.



IHC staining of FFPE human breast carcinoma with DMC1 antibody (clone 2H12/4).  
HIER: boil tissue sections in pH 9 10mM Tris with 1mM EDTA for 10-20 min and allow to cool before testing.

## Description

DNA repair proteins are necessary for the maintenance of chromosome integrity and are involved in the elimination of premutagenic lesions from DNA. The DNA repair proteins Rad51 and Rad52 are key components of the doublestrand-break repair (DSBR) pathway. Rad51 is essential for mitotic and meiotic recombination, and its mutation in yeast and mammalian cells results in chromosome loss. Overexpression of Rad52 confers resistance to ionizing radiation and induces homologous intrachromosomal recombination. Rad52 is thought to be involved in an early stage of Rad51-mediated recombination. Additional proteins involved in the pathway include Nibrin and Dmc1 (Meiotic recombination protein DMC1/LIM15 homolog). Nibrin, which complexes with Mre11 and Rad50, is absent in Nijmegen breakage syndrome (NBS) patients. Dmc1 is specifically involved in meiotic recombination. An alternative spliced form of Dmc1, designated Dmc1-D, is deleted for a region between the two motifs involved in nucleotide binding. The alternatively spliced Dmc1-D transcript is detected in both male and female germ cells, indicating that the encoded protein may have a role in mammalian genetic recombination in meiosis.

## Application Notes

Optimal dilution of the DMC1 antibody should be determined by the researcher.

## Immunogen

A recombinant full-length human protein was used as the immunogen for the DMC1 antibody.

## Storage

Store the DMC1 antibody at 2-8°C (with azide) or aliquot and store at -20°C or colder (without azide).