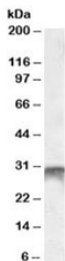


DLX5 Antibody (R33200)

Catalog No.	Formulation	Size
R33200-100UG	0.5 mg/ml in 1X TBS, pH7.3, with 0.5% BSA (US sourced) and 0.02% sodium azide	100 ug

[Bulk quote request](#)

Availability	1-3 business days
Species Reactivity	Human
Predicted Reactivity	Cow, Mouse, Rat
Format	Antigen affinity purified
Host	Goat
Clonality	Polyclonal (goat origin)
Isotype	Goat Ig
Purity	Antigen affinity
Gene ID	1749
Applications	Western Blot : 1-3ug/ml ELISA (peptide) LOD : 1:32000
Limitations	This DLX5 antibody is available for research use only.



Western blot testing of human bone marrow lysate with DLX5 antibody at 1ug/ml.
Predicted molecular weight: ~31kDa.

Description

Additional name(s) for this target protein: Distal-less homeobox 5

Application Notes

Optimal dilution of the DLX5 antibody should be determined by the researcher.

Immunogen

Amino acids AYNRVPSATNQPEK were used as the immunogen for this DLX5 antibody.

Storage

Aliquot and store the DLX5 antibody at -20oC.