

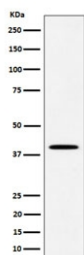
DLX3 Antibody / Homeobox protein DLX-3 [clone 29D60] (RQ8656)

Catalog No.	Formulation	Size
RQ8656	Antibody in PBS with 0.02% sodium azide, 50% glycerol and 0.4-0.5mg/ml BSA	100 ul

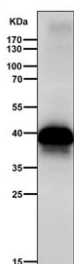
Recombinant RABBIT MONOCLONAL

[Bulk quote request](#)

Availability	1-3 days
Species Reactivity	Human
Format	Purified
Clonality	Recombinant Rabbit Monoclonal
Isotype	Rabbit IgG
Clone Name	29D60
Purity	Affinity chromatography
UniProt	O60479
Applications	Western Blot : 1:500-1:2000
Limitations	This DLX3 antibody is available for research use only.



Western blot testing of human JAR cell lysate with DLX3 antibody. Predicted molecular weight ~32 kDa, commonly observed at 32-38 kDa.



Western blot testing of mouse skin tissue lysate with DLX3 antibody. Predicted molecular weight ~32 kDa, commonly observed at 32-38 kDa.

Description

DLX3 likely activates the transcription of GNRHR via binding to the downstream activin regulatory element (DARE) in the gene promoter. [UniProt]

Application Notes

Optimal dilution of the DLX3 antibody should be determined by the researcher.

Immunogen

A synthetic peptide specific to human DLX3 protein was used as the immunogen for the DLX3 Antibody.

Storage

Store the DLX3 antibody at -20oC.

References (1)