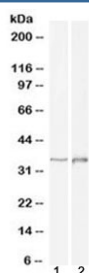


DLX2 Antibody (R36465)

Catalog No.	Formulation	Size
R36465-100UG	0.5 mg/ml in 1X TBS, pH7.3, with 0.5% BSA (US sourced) and 0.02% sodium azide	100 ug

[Bulk quote request](#)

Availability	1-3 business days
Species Reactivity	Human, Mouse, Rat, Pig, Dog, Cow
Format	Antigen affinity purified
Clonality	Polyclonal (goat origin)
Isotype	Goat Ig
Purity	Antigen affinity
UniProt	Q07687
Gene ID	1746
Applications	Western Blot : 1-3ug/ml ELISA (peptide) LOD : 1:4000
Limitations	This DLX2 antibody is available for research use only.



Western blot testing of 1) human cerebellum and 2) rat brain lysate with DLX2 antibody at 1ug/ml. Predicted molecular weight ~34 kDa.

Description

Additional name(s) for this target protein: Distal-less homeobox 2; Homeobox protein DLX-2

Application Notes

Optimal dilution of the DLX2 antibody should be determined by the researcher.

Immunogen

Amino acids NYPWYHQTSGSASH were used as the immunogen for this DLX2 antibody.

Storage

Aliquot and store the DLX2 antibody at -20oC.