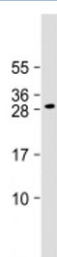


DLX1 Antibody (Center Region) (F54107)

Catalog No.	Formulation	Size
F54107-0.2ML	In 1X PBS, pH 7.4, with 0.09% sodium azide	0.2 ml
F54107-0.05ML	In 1X PBS, pH 7.4, with 0.09% sodium azide	0.05 ml

[Bulk quote request](#)

Availability	1-3 business days
Species Reactivity	Mouse
Predicted Reactivity	Human
Format	Antigen affinity purified
Clonality	Polyclonal (rabbit origin)
Isotype	Rabbit Ig
Purity	Antigen affinity
UniProt	P56177
Applications	Western Blot : 1:2000
Limitations	This DLX1 antibody is available for research use only.



Western blot testing of DLX1 antibody at 1:2000 + mouse brain lysate. Predicted molecular weight ~27 kDa.

Description

Likely to play a regulatory role in the development of the ventral forebrain. May play a role in craniofacial patterning and morphogenesis and may be involved in the early development of diencephalic subdivisions (By similarity). [UniProt]

Application Notes

The stated application concentrations are suggested starting points. Titration of the DLX1 antibody may be required due to differences in protocols and secondary/substrate sensitivity.

Immunogen

A portion of amino acids 84-118 from human DLX1 was used as the immunogen for the DLX1 antibody.

Storage

Aliquot the DLX1 antibody and store frozen at -20oC or colder. Avoid repeated freeze-thaw cycles.