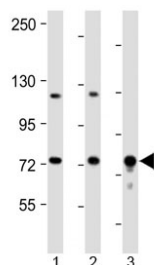


## DLL4 Antibody (F54165)

Catalog No.	Formulation	Size
F54165-0.2ML	In 1X PBS, pH 7.4, with 0.09% sodium azide	0.2 ml
F54165-0.05ML	In 1X PBS, pH 7.4, with 0.09% sodium azide	0.05 ml

[Bulk quote request](#)

<b>Availability</b>	1-3 business days
<b>Species Reactivity</b>	Mouse, Rat
<b>Predicted Reactivity</b>	Human
<b>Format</b>	Antigen affinity purified
<b>Host</b>	Rabbit
<b>Clonality</b>	Polyclonal (rabbit origin)
<b>Isotype</b>	Rabbit Ig
<b>Purity</b>	Antigen affinity
<b>UniProt</b>	Q9NR61
<b>Applications</b>	Western Blot : 1:1000-1:2000
<b>Limitations</b>	This DLL4 antibody is available for research use only.



Western blot testing of 1) mouse kidney, 2) mouse lung and 3) rat lung tissue lysate with DLL4 antibody at 1:2000. Predicted molecular weight: 75-85 kDa.

## Description

Delta-like protein 4 is involved in the Notch signaling pathway as Notch ligand. Activates NOTCH1 and NOTCH4. Involved in angiogenesis; negatively regulates endothelial cell proliferation and migration and angiogenic sprouting. Essential for retinal progenitor proliferation is required for suppressing rod fates in late retinal progenitors as well as for proper generation of other retinal cell types. During spinal cord neurogenesis, inhibits V2a interneuron fate.

## Application Notes

The stated application concentrations are suggested starting points. Titration of the DLL4 antibody may be required due to differences in protocols and secondary/substrate sensitivity.

## Immunogen

Recombinant human Delta-like protein 4 protein was used as the immunogen for the DLL4 antibody.

## Storage

Aliquot the DLL4 antibody and store frozen at -20oC or colder. Avoid repeated freeze-thaw cycles.