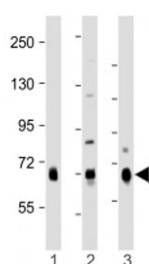


DLL4 Antibody (C-Terminal Region) (F54133)

| Catalog No. | Formulation | Size |
|---------------|--|---------|
| F54133-0.2ML | In 1X PBS, pH 7.4, with 0.09% sodium azide | 0.2 ml |
| F54133-0.05ML | In 1X PBS, pH 7.4, with 0.09% sodium azide | 0.05 ml |

Bulk quote request

| | |
|---------------------------|--|
| Availability | 1-3 business days |
| Species Reactivity | Human, Mouse, Rat |
| Format | Antigen affinity purified |
| Clonality | Polyclonal (rabbit origin) |
| Isotype | Rabbit Ig |
| Purity | Antigen affinity |
| UniProt | Q9NR61 |
| Applications | Western Blot : 1:1000-1:2000 |
| Limitations | This DLL4 antibody is available for research use only. |



Western blot testing of DLL4 antibody at 1:1000: Lane 1) human lung, 2) mouse kidney and 3) rat lung lysate. Predicted molecular weight ~75 kDa.

Description

Delta-like protein 4 is involved in the Notch signaling pathway as Notch ligand. Activates NOTCH1 and NOTCH4. Involved in angiogenesis; negatively regulates endothelial cell proliferation and migration and angiogenic sprouting. Essential for retinal progenitor proliferation is required for suppressing rod fates in late retinal progenitors as well as for proper generation of other retinal cell types. During spinal cord neurogenesis, inhibits V2a interneuron fate. [UniProt]

Application Notes

The stated application concentrations are suggested starting points. Titration of the DLL4 antibody may be required due to differences in protocols and secondary/substrate sensitivity.

Immunogen

A portion of amino acids 608-641 from human DLL4 was used as the immunogen for the DLL4 antibody.

Storage

Aliquot the DLL4 antibody and store frozen at -20oC or colder. Avoid repeated freeze-thaw cycles.